

COMMUNICATIONS  
FROM THE  
KONKOLY OBSERVATORY  
OF THE  
HUNGARIAN ACADEMY OF SCIENCES

MITTEILUNGEN  
DER  
STERNWARTE  
DER UNGARISCHEN AKADEMIE  
DER WISSENSCHAFTEN

BUDAPEST — SZABADSÁGHEGY

No. 78.

I. GUMAN  
**AC ANDROMEDAE**

BUDAPEST, 1982

---

ISBN 963 8361 19 0  
HU ISSN 0324 - 2234  
Felelős kiadó: Szeidl Béla

Hozott anyagról sokszorosítva

8213658 MTA KESZ Sokszorosító, Budapest. F. v.: dr. Héczey Lászlóné

## AC ANDROMEDAE

### ABSTRACT

More than five thousand photographic observations of AC Andromedae made at the Konkoly Observatory between 1935 and 1956, as well as 680 photoelectric ones (obtained in the period 1954 - 1956) are published. The values of the three periods are refined.

### INTRODUCTION

The variable star AC And (BD +47<sup>o</sup>4104, 9<sup>m</sup>.4) was discovered by Guthnick and Prager (1927). The discoverers and the other observers, especially Lause (1932, 1933) were long at a loss for an explanation of its strong light curve variations. The light variation was sometimes definitely of RR Lyrae type, but in spite of the efforts made, no adequate period could be derived for the light changes. Ten years after the star's discovery, Florja (1937) made considerable progress in investigating its strange behaviour. He complemented the previously published observations with his own visual ones and on thoroughly investigating the light curves, he found that the course of the light variation could be described as the linear superposition of the light curves of two RR Lyrae type stars, one of which had a period of 0.525 day; the other having 0.711 day and a somewhat smaller amplitude. Subsequent observers also found that when the maxima of the 0.525 day and 0.711 day cycles coincided the observed maxima were high, otherwise they remained low or completely disappeared.

The strange behaviour of this star also aroused L. Detre's interest and in 1935 he included AC And into the observing programme of Konkoly Observatory. In 1941, the present author also took up the observations. Up to 1954, observations had been carried out photographically; numerous photoelectric observations were obtained between 1954 and 1956. The photoelectric observations made from 1958 through 1962 were analysed by Fitch and Szeidl (1976).

It was realized that Florja's periods could not explain the characteristics of the light curves in a satisfactory manner even though they could be used successfully to predict the times of the highest maxima. Relying

---

upon these findings it was suspected that, in order to account the strongly variable light curves, further period or periods should have been supposed over and above the well-known two periods (cf. *Guman*, paper read at the Variable Star Conference, Budapest, 27 August 1956, *Mitt. Sternw. ung. Akad. Wiss.* No. 42. 1957, p.3; *Kukarkin et al.*, 1969).

In their thorough analysis of the 1958-1962 observations *Fitch* and *Szeidl* (1976) showed that there was, indeed, a third period of 0.421 day in the pulsation of AC And. The complicated light variation can be adequately explained by the simultaneous, non-linearly coupled pulsations with these three periods.

Since AC And exhibits this unique phenomenon, every observation even if less accurate than photoelectric ones may be of importance, hence the presentation of my unpublished observations. The use of these data have enabled more accurate values of the periods to be determined.

#### THE OBSERVATIONS

The observations published here were carried out between 1935 and 1956 and include 5670 photographic observations in the years 1935-1954, and 680 photoelectric observations in the period 1954-1956.

The photographic observations were commenced by *Drs. Julia Balázs* and *L. Detre* who obtained 184 observations on five nights in 1935-1937. Between 1941 and 1954 the present author made 4138 observations during 133 nights; the remaining observations were collected by the staff with the 7 inch astrograph of Konkoly Observatory. First Eastman 40, later Guilleminot Superfulgur photographic plates were used. Usually 20-25 four-minute exposures were taken in succession on each plate. The measurements of all the plates and the reductions were carried out by the author. Most of the plates were measured by a Rosenberg-type electromicrophotometer, only a few by a Zeiss-type Schnell-photometer.

The photographic magnitudes of the comparison stars (Table I) have been determined by comparison with NPS utilizing two plates made in 1935 and 1949. The identification chart of the comparison stars is given in Figure 1. The heliocentric Julian Dates and the obtained photographic magnitudes of AC And are presented in Table II.

The photoelectric observations were made on Konkoly Observatory's 24 inch reflector without any filter; the photometer employed an uncooled RCA 1P21 photomultiplier (for detailed description see *Balázs* and *Detre*, 1954).

Table I  
The comparison stars

Star	$m_{pg}$
p BD +47 <sup>o</sup> 4103	10.06
c BD +48 <sup>o</sup> 3989	10.33
r	10.63
t	10.97
d	11.20
s	11.44
q	11.92

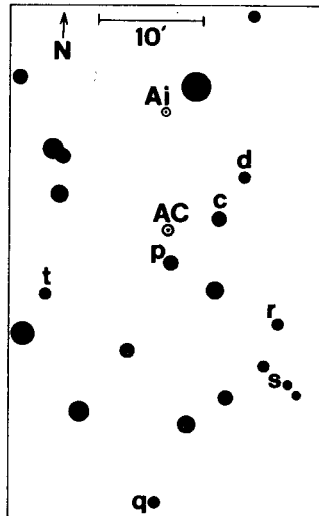


Figure 1

Identification chart of AC And

BD +48<sup>o</sup>3989 (=c of the photographic sequence) served as the comparison star. The photoelectric observations (in the sense variable minus comparison) can be found in Table III.

#### THE PERIODS

As has been already mentioned, according to *Fitch and Szeidl (1976)*, AC And is a short period cepheid in which the fundamental, first and sec-

ond overtone pulsation modes are simultaneously excited and non-linearly coupled. Since the photoelectric observations used in their work cover only a short time interval (1958-1962) they accepted the two known periods derived earlier by me (see Kukarkin et al., 1969) and could determine the third period only with less accuracy. Therefore it seemed desirable to use the photographic observations covering nearly 20 years for a more accurate determination of the periods. (The photoelectric observations are due to be discussed in a future paper.)

The photographic observational material given here is the most extensive ever published of this star; in particular, the observations between 1945 and 1953 provide a homogeneous continual series.

To facilitate the processing of the data and light curves it seemed reasonable to make more characteristic sets of brightness variation but a smaller number. Thus all the photographic observations were collected on a magnetic tape and then plotted thereby enabling the light curves to be used with sufficient certainty (neglecting the possible microstructure). Then, from the light curves obtained in such a way, the magnitudes could be read in by a digitizer to a magnetic tape at equidistant time intervals. (The length of the intervals depended on the character of the light curves: for low maxima the interval was chosen to be  $0.02^d$  or  $0.01^d$ , for high maxima it was  $0.005^d$ .) All the manipulations were carried out by an HP 9810A computer. The homogeneous sets of 1688 magnitudes obtained by the above described procedure are given in Table IV. These data sets well represent the light variations of AC And.

It is intended that the shape of the light curves and its variations be discussed in a later paper. Here, it is mentioned that the height of maxima changes considerably depending on the phase relations of the three periods. The highest maxima reach the value of 10.20 magn., the lowest ones are at 11.30 magn. The amplitude belonging to the highest maxima exceeds 1.5 magn., the smallest amplitude is hardly more than 0.2 magn. (see Figure 2).

In order to obtain more accurate values of the periods the following procedure was used. If all the observations are plotted against phases of one of the three periods the mass of points near 0 phase shows all the maxima according to the period in question, from the lowest ones to the highest ones. About half a period later, because of the minima at given period, the points are under the highest maxima. The maximum of the envelope of the mass of points determines the 0 phase of the period in question very accurately.

The periods given in the paper of *Fitch and Szeidl* (1976) were used in

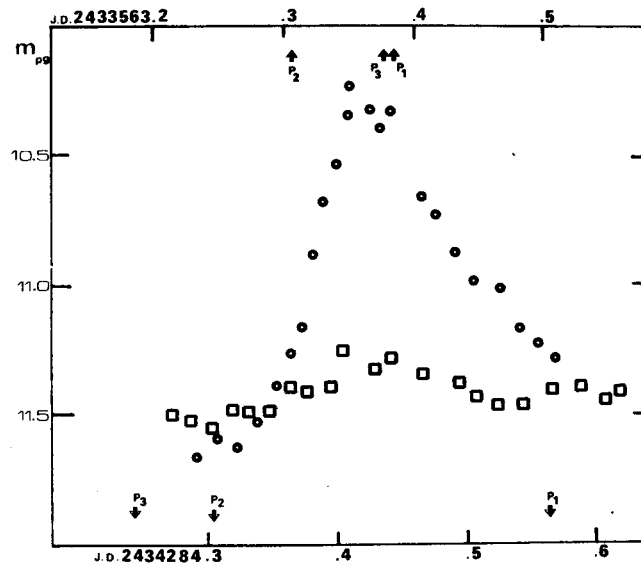


Figure 2

One of the brightest (J.D. 2433563 open circles) and one of the faintest (J.D. 2434284 squares) maxima of AC And. The arrows indicate the calculated zero phases for each of the three periods. Each point is a mean of three photographic observations on the ascending branch, otherwise of five observations.

the construction of the figures - supposing that at one of the highest maxima (on J.D. 2432467) the phase of each period was nearly 0. These initial elements were:

$$\begin{aligned} \text{J.D. } 2432467.373 + 0.71124243 \cdot E_1 & \quad \text{Guman (see Kukarkin et al., 1969)} \\ \text{J.D. } 2432467.373 + 0.52512677 \cdot E_2 & \\ \text{J.D. } 2432467.373 + 0.421069 \cdot E_3 & \quad \text{Fitch and Szeidl (1976)} \end{aligned}$$

All the utilized observations of the phases of these periods showed considerable scattering. Even so, it is apparent from the figures that the envelope curves slowly shifted from year to year. Therefore the observations were divided into ten groups and then separately plotted against the phase of each of the three periods. In this way ten separate envelopes could be constructed for each period. The shift of each envelope determined an O-C value and, finally ten O-C residuals could be derived for each period. Using these data a least squares solution gave the following elements:

$$\begin{aligned} \text{J.D. } 2428009.429 &+ 0.^{\text{d}}.71122470 \cdot E_1 \\ &\pm .005 \quad \pm .00000074 \\ \text{J.D. } 2428009.571 &+ 0.^{\text{d}}.52512629 \cdot E_2 \\ &\pm .004 \quad \pm .00000045 \\ \text{J.D. } 2428009.496 &+ 0.^{\text{d}}.42106751 \cdot E_3 \\ &\pm .004 \quad \pm .00000037 \end{aligned}$$

With the phases deduced from these new elements all the observations were plotted for each period separately (Figure 3a, 3b and 3c). Most of the points of the different epochs coincided in a satisfactory manner. It is immediately evident that the  $0.^{\text{d}}.711$  and  $0.^{\text{d}}.525$  periods have a much greater influence on the light curve than the  $0.^{\text{d}}.421$  period. The amplitude of the envelopes belonging to the longer periods is about 1.0 magn; the faintest observations are about 0.3 magn. brighter at phase  $\varphi = 0.2$  than at  $\varphi = 0.6$ . The envelope curve drawn according to the  $0.^{\text{d}}.421$  period has an amplitude of only 0.8 magn. with scattering of the observations greater in the direction of the phase axis, and finally the influence of the period cannot be seen at the faintest observations.

Knowing the three periods it is worth examining the length of cycles which repeat the same types of light curves. From the periods two different cycles can be derived which yield the repetition of the highest maxima. One of them is:

$$3P_1 = 2.^{\text{d}}.134, 4P_2 = 2.^{\text{d}}.101, 5P_3 = 2.^{\text{d}}.105$$

which was already found by the very first observers. This  $2.^{\text{d}}.1$  repetition disappears very quickly, only two or three repetitions can be followed.

The other cycle is :

$$45P_1 = 32.^{\text{d}}.005, 61P_2 = 32.^{\text{d}}.033, 76P_3 = 32.^{\text{d}}.001$$

which can be observed two or three times one after the other during an observational season. Azarnova (1956, 1957) considered this  $32.^{\text{d}}$  cycle as the period of the light curve changes, like the period of the *Blazhko* effect in RR Lyrae stars. But two features contradict this suggestion. First this period cannot be followed after two or three repetitions and, secondly, the height of maxima does not change continuously during such a cycle.

Besides these two cycles, no other coincidences of this kind between the periods could be found. Both of these cycles are nearly integral multiples of one day and, in consequence, if the star is observed only from one geographical location spurious secular variations of the light curve may be



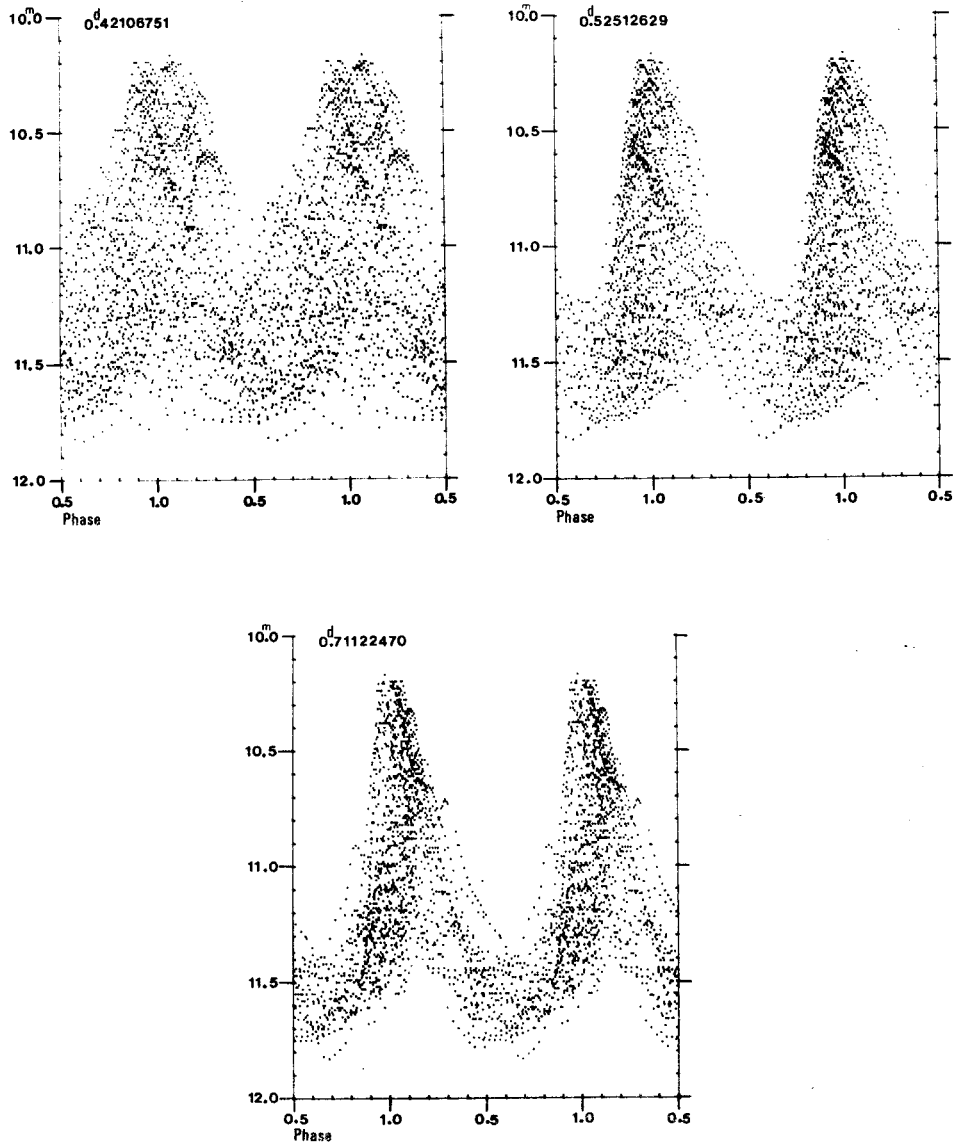


Figure 2a, b, c

Characteristic points of the light curves plotted against phases of each of the three periods

deduced because there are observational seasons during which no very high maxima can be observed.

From the above data it is not possible to decide which of the two longer periods has the greater influence on the light curve though *Fitch* and *Szeidl's* (1976) results suggest that it is the  $0.711^d$  period.

The photographic material presented indicates that the considerable secondary and double maxima on the light curves calculated by *Florja* and his followers are not real, even the smaller waves required by *Fitch* and *Szeidl's* calculated light curves (see the light curve on J.D. 2437562 in their Figure 1) cannot be seen on the observed light curves. Nevertheless smaller waves can really be found on the light curves, especially near the minimum and maximum. But these waves do not seem to be related to the known periods. These are rather like the phenomena observed on some light curves of RR Lyrae type stars (e.g. RR Lyrae itself). The observations indicate that one can observe three  $0.7^d$  cycles during  $2.1^d$  that are strongly deformed by the other periods, but no significant secondary maxima are recognizable. This would refer to the fact that the  $0.711^d$  period is the fundamental one. This problem could be, however, investigated by international (literally intercontinental) cooperation given a some days' long continuous light curve.

The author wishes to express his thanks to *Prof. I. Almár*, the director of the Cosmic Geodesic Observatory, for allocation of computer time.

Budapest-Szabadsághegy, 31 August 1981

#### REFERENCES

- Azarnova, T.A., 1956, *Astr. Cirk.*, No. 170, 10  
 Azarnova, T.A., 1957, *Perem. Zvezdy*, 12, 83  
 Balázs, J. Detre, L., 1954, *Mitt.d.Sternw.d.u.A.W.*, Budapest No. 33, 9  
 Fitch, W.S., Szeidl, B., 1976, *Ap.J.* 203, 616  
 Florja, N.T., 1937, *R.A.J.* 14, 11  
 Guthnick, P., Prager, R., 1927, *Astr.Nachr.* 229, 455  
 Lause, F., 1932, *Astr.Nachr.* 245, 329  
 Lause, F., 1933, *Astr.Nachr.* 249, 377  
 Kukarkin, B. V., Kholopov, P. N., Efremov, Yu. N., Kukarkina, N. P.,  
 Kurochkin, N.E., Medvedeva, G.I., Perova, N.B., Fedorovich, V.P.,  
 Frolov, N.S., 1969, *General Catalogue of Variable Stars*, 3rd ed., Vol.1,  
 A29, No. 1981

Table II  
Photographic observations of AC Andromedae

J.D.	m	J.D.	m	J.D.	m
2428009+		2428047+		2428047+	
0.551	10.60	0.488	11.26	0.594	11.34
0.556	10.56	0.490	11.36	0.596	11.41
		0.492	11.43	0.598	11.42
		0.494	11.36	0.600	11.39
2428047+		0.496	11.34	0.602	11.40
0.391	11.05	0.498	11.33	0.604	11.32
0.393	11.17	0.500	11.32	0.606	11.46
0.395	11.23	0.502	11.31	0.608	11.42
0.397	11.19	0.504	11.29	0.610	11.43
0.399	11.20	0.506	11.22	0.613	11.42
0.401	11.19	0.508	11.22	0.615	11.43
0.404	11.05	0.510	11.28		
0.406	11.21	0.513	11.28	2428048+	
0.408	11.16	0.515	11.28	0.497	10.98
0.410	11.20	0.517	11.36	0.499	10.91
0.412	11.21	0.519	11.26	0.501	10.94
0.414	11.20	0.521	11.27	0.503	11.00
0.416	11.16	0.523	11.25	0.505	11.00
0.418	11.13	0.525	11.28	0.507	10.95
0.420	11.12	0.527	11.27	0.511	10.98
0.422	11.04	0.529	11.30	0.513	10.86
0.424	11.06	0.531	11.24	0.516	10.84
0.426	11.13	0.533	11.36	0.520	10.90
0.429	11.19	0.535	11.19	0.522	10.82
0.431	11.20	0.538	11.27	0.526	10.86
0.433	11.13	0.540	11.21	0.531	10.73
0.435	11.20	0.542	11.27	0.533	10.74
0.437	11.22	0.544	11.26	0.535	10.83
0.439	11.19	0.546	11.31	0.538	10.75
0.441	11.11	0.548	11.32	0.540	10.77
0.443	11.15	0.550	11.39	0.542	10.79
0.445	11.17	0.552	11.29	0.544	10.81
0.447	11.21	0.554	11.34	0.546	10.83
0.449	11.19	0.556	11.42	0.548	10.85
0.450	11.23	0.558	11.38	0.550	10.88
0.453	11.19	0.563	11.41	0.552	10.81
0.455	11.12	0.565	11.41	0.554	10.88
0.457	11.20	0.567	11.36	0.556	10.92
0.459	11.23	0.569	11.55	0.558	10.86
0.461	11.17	0.571	11.50	0.560	10.89
0.463	11.18	0.573	11.38	0.563	10.88
0.465	11.19	0.575	11.33	0.565	10.79
0.467	11.17	0.577	11.33	0.567	10.89
0.469	11.14	0.579	11.29		
0.472	11.10	0.588	11.35	2428489+	
0.474	11.22	0.590	11.39	0.537	10.50
0.476	11.18	0.592	11.27	0.539	10.43
0.478	11.16				

Table II (cont.)

J.D.	m	J.D.	m	J.D.	m
2428489+		2428790+		2430258+	
0.541	10.37	0.598	11.36	0.534	11.44
0.544	10.39	0.601	11.32	0.537	11.45
		0.603	11.40	0.540	11.56
		0.606	11.40	0.543	11.48
2428790+				0.545	11.40
0.464	10.79	2430258+		0.548	11.52
0.467	10.72	0.276	11.00	0.551	11.46
0.469	10.97	0.279	10.89	0.554	11.50
0.472	10.95	0.281	11.02	0.558	11.45
0.475	10.74	0.284	11.00	0.561	11.32
0.478	10.92	0.287	11.08	0.563	11.53
0.480	10.80	0.290	11.04	0.566	11.53
0.483	10.82	0.293	11.07	0.569	11.51
0.486	10.81	0.295	11.00	0.572	11.54
0.489	10.95	0.298	11.12	0.574	11.46
0.492	10.91	0.301	11.14	0.577	11.34
0.495	10.80	0.304	11.00	0.580	11.55
0.498	10.87	0.306	11.10	0.583	11.45
0.501	10.90	0.309	11.08	0.586	11.45
0.503	11.00	0.312	11.08	0.588	11.42
0.506	11.00	0.459	11.37	0.591	11.42
0.509	10.95	0.462	11.44	0.594	11.32
0.512	11.06	0.465	11.36	0.599	11.42
0.514	11.10	0.468	11.52	0.602	11.43
0.517	11.07	0.470	11.38	0.605	11.44
0.520	10.93	0.473	11.41	0.608	11.32
0.523	11.00	0.476	11.30		
0.526	11.02	0.479	11.40	2430259+	
0.528	11.05	0.481	11.49	0.259	11.10
0.531	10.99	0.484	11.40	0.262	11.00
0.534	10.95	0.487	11.50	0.265	11.13
0.542	11.10	0.490	11.44	0.267	11.10
0.545	11.17	0.493	11.55	0.270	11.05
0.548	11.17	0.495	11.49	0.273	11.24
0.551	11.10	0.498	11.42	0.276	11.16
0.553	11.16	0.501	11.41	0.279	11.06
0.556	11.16	0.504	11.54	0.281	11.21
0.559	11.18	0.506	11.57	0.284	11.15
0.562	11.17	0.509	11.40	0.287	11.14
0.564	11.10	0.512	11.58	0.291	11.11
0.567	11.20	0.515	11.36	0.294	11.13
0.573	11.18	0.518	11.46	0.297	11.09
0.576	11.19	0.520	11.35	0.299	11.14
0.581	11.23	0.523	11.51	0.301	11.26
0.584	11.27	0.526	11.45	0.303	11.26
0.587	11.32	0.529	11.52	0.305	11.29
0.589	11.20	0.531	11.39	0.307	11.30
0.595	11.25				

Table II (cont.)

J.D.	m	J.D.	m	J.D.	m
2430259+		2430259+		2430259+	
0.309	11.26	0.428	11.50	0.534	11.84
0.311	11.25	0.430	11.76	0.537	11.83
0.313	11.17	0.432	11.68	0.539	11.80
0.315	11.22	0.434	11.50	0.541	11.79
0.317	11.24	0.437	11.71	0.543	11.80
0.324	11.30	0.439	11.62	0.545	11.78
0.326	11.20	0.441	11.64	0.547	11.78
0.328	11.23	0.443	11.63	0.549	11.79
0.330	11.16	0.445	11.60	0.551	11.90
0.332	11.22	0.447	11.58	0.553	11.82
0.334	11.20	0.449	11.60	0.555	11.72
0.336	11.31	0.453	11.58	0.557	11.90
0.338	11.36	0.457	11.60	0.559	11.98
0.340	11.24	0.460	11.69	0.562	11.86
0.342	11.32	0.462	11.65	0.564	12.10
0.344	11.36	0.464	11.70	0.566	11.66
0.347	11.30	0.466	11.60	0.568	11.81
0.349	11.32	0.469	11.81	0.570	11.75
0.351	11.32	0.471	11.69	0.572	11.81
0.353	11.28	0.473	11.55	0.576	11.90
0.355	11.29	0.475	11.64	0.578	11.85
0.357	11.31	0.477	11.71	0.580	11.80
0.359	11.49	0.479	11.60	0.582	11.85
0.361	11.43	0.481	11.56	0.584	11.76
0.363	11.24	0.483	11.77	0.587	11.76
0.365	11.25	0.485	11.73	0.589	11.80
0.367	11.53	0.487	11.76	0.591	11.96
0.369	11.39	0.489	11.67	0.593	11.65
0.372	11.36	0.491	11.78	0.595	11.94
0.376	11.41	0.494	11.73	0.597	11.86
0.379	11.35	0.496	11.78	0.599	11.60
0.381	11.45	0.501	11.88	0.601	11.85
0.383	11.47	0.503	11.86	0.603	11.75
0.385	11.59	0.505	11.80	0.605	11.60
0.387	11.43	0.507	11.88	0.607	11.55
0.389	11.45	0.509	11.92	0.609	11.66
0.391	11.32	0.512	11.90	0.612	11.74
0.393	11.58	0.514	11.90	0.614	11.56
0.395	11.54	0.516	11.62	0.616	11.69
0.397	11.54	0.518	11.90	0.618	11.50
0.399	11.60	0.520	11.83	0.620	11.60
0.404	11.52	0.522	11.87	0.622	11.58
0.406	11.40	0.524	11.68	0.624	11.57
0.408	11.64	0.526	11.78	0.626	11.62
0.410	11.55	0.528	11.90	0.628	11.58
0.424	11.60	0.530	11.83	0.630	11.59
0.426	11.60	0.532	11.82	0.632	11.54

Table II (cont.)

J.D.	m	J.D.	m	J.D.	m
2430259+		2430260+		2430261+	
0.634	11.58	0.526	11.36	0.305	10.87
0.636	11.60	0.528	11.32	0.307	10.86
		0.530	11.25	0.309	10.80
2430260+		0.532	11.32	0.311	10.97
0.434	11.30	0.532	11.32	0.313	10.61
0.436	11.44	0.536	11.29	0.316	10.97
0.439	11.42	0.538	11.28	0.318	10.71
0.440	11.32	0.543	11.29	0.320	10.80
0.443	11.30	0.545	11.41	0.324	10.75
0.445	11.31	0.547	11.33	0.326	10.90
0.447	11.21	0.549	11.27	0.328	10.75
0.449	11.20	0.551	11.19	0.330	10.73
0.451	11.30	0.553	11.22	0.332	10.93
0.453	11.17	0.555	11.30	0.334	10.79
0.455	11.32	0.557	11.35	0.336	10.77
0.457	11.23	0.561	11.27	0.338	10.83
0.459	11.25	0.563	11.32	0.341	11.01
0.461	11.25	0.566	11.21	0.343	10.84
0.463	11.25	0.568	11.30	0.345	10.82
0.466	11.29	0.570	11.23	0.347	10.79
0.468	11.27	0.572	11.40	0.349	10.83
0.470	11.25	0.574	11.43	0.351	10.87
0.472	11.26	0.576	11.28	0.353	10.95
0.474	11.27	0.578	11.30	0.355	11.00
0.476	11.20	0.580	11.33	0.357	10.96
0.478	11.21	0.582	11.40	0.359	11.00
0.480	11.30	0.584	11.32	0.363	10.97
0.482	11.17	0.586	11.18	0.370	10.94
0.486	11.32	0.588	11.20	0.372	10.82
0.488	11.34	0.591	11.20	0.374	10.85
0.490	11.32	0.593	11.44	0.376	10.97
0.493	11.22	0.597	11.43	0.378	10.90
0.495	11.30	0.600	11.38	0.380	10.94
0.497	11.38	0.602	11.40	0.382	10.90
0.499	11.32	0.604	11.37	0.384	10.93
0.501	11.26	0.608	11.43	0.386	11.01
0.503	11.43	0.610	11.37	0.388	10.94
0.505	11.35	0.612	11.22	0.391	11.00
0.507	11.33	0.614	11.24	0.393	10.97
0.509	11.30	0.616	11.23	0.395	11.05
0.511	11.36	0.618	11.46	0.397	11.00
0.513	11.29	0.620	11.34	0.399	11.09
0.516	11.32	0.622	11.43	0.401	11.06
0.518	11.46	0.625	11.30	0.403	11.15
0.520	11.39	0.627	11.27	0.405	11.09
0.522	11.37			0.407	11.00
0.524	11.30	2430261+		0.409	11.16
		0.303	10.85		

Table II (cont.)

J.D.	m	J.D.	m	J.D.	m
2430261+		2430262+		2430262+	
0.411	11.18	0.368	11.37	0.595	11.32
0.413	11.19	0.370	11.37	0.597	11.12
0.416	11.09	0.372	11.53	0.599	11.16
0.418	11.10	0.374	11.48	0.601	11.16
0.420	11.18	0.376	11.35	0.605	11.35
0.422	11.19	0.382	11.47	0.609	11.36
0.424	11.11	0.385	11.38	0.611	11.16
0.426	11.24	0.387	11.56		
0.428	11.16	0.389	11.35	2430266+	
0.430	11.20	0.391	11.33	0.442	11.78
0.441	11.37	0.393	11.48	0.444	11.57
0.445	11.33	0.395	11.51	0.446	11.66
0.447	11.37	0.397	11.32	0.448	11.75
0.449	11.39	0.403	11.45	0.451	11.59
0.453	11.33	0.405	11.55	0.455	11.69
0.455	11.25	0.412	11.45	0.457	11.73
0.457	11.41	0.414	11.41	0.459	11.58
0.459	11.33	0.416	11.45	0.461	11.57
0.461	11.32	0.418	11.45	0.463	11.60
0.468	11.26	0.520	11.48	0.465	11.68
0.470	11.25	0.522	11.38	0.467	11.57
0.472	11.43	0.524	11.43	0.469	11.72
0.474	11.23	0.526	11.27	0.471	11.62
0.476	11.37	0.528	11.25	0.473	11.57
0.478	11.40	0.530	11.30	0.476	11.64
0.480	11.37	0.532	11.25	0.478	11.63
0.482	11.54	0.535	11.30	0.480	11.65
0.484	11.51	0.537	11.23	0.482	11.50
0.486	11.36	0.543	11.15	0.484	11.60
0.488	11.26	0.545	11.30	0.486	11.54
0.491	11.45	0.547	11.48	0.488	11.54
0.493	11.35	0.549	11.40	0.490	11.52
0.495	11.53	0.551	11.18	0.492	11.54
0.497	11.39	0.555	11.48	0.494	11.52
0.499	11.34	0.557	11.29	0.496	11.52
0.501	11.54	0.560	11.32	0.498	11.51
0.505	11.49	0.562	11.39	0.501	11.45
0.507	11.45	0.564	11.27	0.503	11.66
0.509	11.37	0.571	11.30	0.507	11.48
0.511	11.38	0.573	11.20	0.509	11.60
		0.575	11.20	0.511	11.60
2430262+		0.578	11.35	0.513	11.55
0.357	11.45	0.585	11.17	0.515	11.55
0.359	11.46	0.587	11.30	0.517	11.62
0.362	11.36	0.589	11.39	0.519	11.68
0.364	11.44	0.591	11.37	0.521	11.68
0.366	11.41	0.593	11.32	0.523	11.59

Table II (cont.)

J.D.	m	J.D.	m	J.D.	m
2430266+		2430266+		2430285+	
0.526	11.52	0.634	11.60	0.444	10.39
0.528	11.58	0.636	11.46	0.446	10.40
0.530	11.64	0.638	11.53	0.448	10.32
0.532	11.58			0.452	10.41
0.534	11.38	2430267+		0.454	10.35
0.536	11.48	0.452	11.72		
0.538	11.62	0.455	11.57	2431684+	
0.540	11.56	0.457	11.66	0.367	10.63
0.542	11.53	0.459	11.59	0.369	10.82
0.546	11.49	0.461	11.63	0.371	10.71
0.551	11.49	0.463	11.61	0.373	10.74
0.553	11.60	0.465	11.70	0.375	10.97
0.555	11.70	0.467	11.61	0.377	10.80
0.557	11.70	0.469	11.51	0.379	10.73
0.559	11.58	0.471	11.52	0.381	10.89
0.561	11.52	0.473	11.65	0.384	10.96
0.563	11.62	0.475	11.45	0.386	10.90
0.565	11.60	0.477	11.42	0.388	10.93
0.567	11.56	0.480	11.66	0.392	10.94
0.569	11.43	0.482	11.58	0.396	10.80
0.571	11.67	0.484	11.63	0.404	10.98
0.576	11.58	0.486	11.47	0.407	11.10
0.578	11.59	0.488	11.58	0.409	10.94
0.580	11.76	0.490	11.59	0.411	10.90
0.582	11.71	0.492	11.62	0.418	11.10
0.584	11.55	0.494	11.63		
0.586	11.70	0.496	11.51	2431695+	
0.588	11.63			0.311	11.58
0.590	11.70	2430285+		0.313	11.45
0.594	11.54	0.406	10.56	0.316	11.42
0.596	11.62	0.408	10.63	0.318	11.67
0.598	11.62	0.410	10.60	0.320	11.65
0.601	11.79	0.412	10.50	0.322	11.56
0.603	11.57	0.414	10.50	0.324	11.58
0.605	11.49	0.417	10.43	0.328	11.43
0.607	11.74	0.419	10.36	0.330	11.65
0.609	11.54	0.421	10.32	0.334	11.46
0.611	11.78	0.423	10.31	0.336	11.54
0.613	11.65	0.425	10.31	0.342	11.53
0.615	11.62	0.427	10.30	0.345	11.75
0.617	11.78	0.429	10.32	0.349	11.66
0.619	11.64	0.431	10.38	0.357	11.60
0.621	11.68	0.433	10.30	0.359	11.52
0.623	11.56	0.435	10.35	0.361	11.50
0.626	11.57	0.437	10.38	0.363	11.54
0.628	11.78	0.439	10.37	0.366	11.38
0.632	11.62	0.442	10.36	0.368	11.67



Table II (cont.)

J.D.	m	J.D.	m	J.D.	m
2431695+		2431703+		2431704+	
0.372	11.70	0.504	11.40	0.343	10.59
0.374	11.60	0.506	11.16	0.354	10.57
0.376	11.53	0.508	11.14	0.357	10.63
0.378	11.64	0.510	11.37	0.368	10.61
0.382	11.52	0.512	11.12	0.371	10.63
0.384	11.51	0.514	11.27	0.375	10.66
0.386	11.55	0.516	11.07	0.378	10.67
0.393	11.66	0.520	11.41	0.385	10.71
0.395	11.64	0.522	11.40	0.389	10.75
0.403	11.40	0.524	11.30	0.392	10.87
0.405	11.47	0.529	11.43	0.395	10.80
0.407	11.70	0.531	11.30	0.400	10.82
0.409	11.78	0.535	11.39	0.406	10.91
0.411	11.60	0.537	11.34	0.409	10.92
0.426	11.64	0.539	11.39	0.413	10.83
0.435	11.45	0.541	11.11	0.416	10.76
0.437	11.64	0.543	11.33	0.420	10.91
0.439	11.48	0.545	11.24	0.423	10.89
0.448	11.63	0.549	11.26	0.427	11.00
0.450	11.70	0.551	11.14	0.430	11.09
0.452	11.50	0.554	11.18	0.434	11.17
0.463	11.72	0.556	11.43	0.437	11.06
0.465	11.72	0.558	11.43	0.468	11.18
0.479	11.50	0.560	11.30	0.472	11.16
0.481	11.54	0.562	11.08	0.475	11.21
0.485	11.54	0.564	11.20	0.479	11.10
0.489	11.46	0.566	11.20	0.482	11.23
0.491	11.50	0.568	11.33	0.486	11.40
		0.570	11.41	0.489	11.29
2431703+		0.572	11.29	0.493	11.41
0.466	11.16	0.574	11.29	0.496	11.33
0.468	11.22	0.576	11.43	0.500	11.43
0.470	11.07	0.579	11.29	0.503	11.50
0.472	11.13			0.507	11.29
0.474	11.20	2431704+		0.510	11.41
0.476	11.34	0.302	11.22	0.513	11.40
0.481	11.25	0.305	11.00	0.517	11.56
0.483	11.33	0.307	10.88	0.520	11.43
0.485	11.38	0.309	10.96	0.524	11.45
0.487	11.25	0.312	10.84	0.527	11.47
0.489	11.23	0.316	10.74	0.531	11.46
0.491	11.26	0.319	10.63	0.534	11.57
0.493	11.31	0.326	10.54	0.536	11.70
0.495	11.17	0.330	10.52	0.538	11.50
0.497	11.39	0.333	10.53	0.541	11.50
0.499	11.46	0.336	10.57	0.543	11.38
0.501	11.07	0.340	10.60	0.545	11.52

Table II (cont.)

J.D.	m	J.D.	m	J.D.	m
2431704+		2431707+		2432092+	
0.547	11.53	0.432	11.42	0.427	11.41
0.549	11.53	0.453	11.58	0.429	11.53
0.551	11.51	0.455	11.60	0.432	11.46
0.553	11.56	0.457	11.50	0.435	11.65
0.555	11.56	0.459	11.62	0.441	11.42
0.557	11.53	0.462	11.70	0.475	11.40
0.559	11.57	0.464	11.56	0.477	11.33
0.561	11.63	0.466	11.43	0.480	11.40
0.563	11.77	0.468	11.43	0.483	11.29
0.566	11.65	0.470	11.65	0.486	11.27
0.568	11.55	0.472	11.56	0.488	11.11
0.570	11.70	0.474	11.49	0.491	11.27
0.572	11.72	0.476	11.47	0.494	11.20
0.574	11.66	0.478	11.49	0.500	11.31
0.576	11.80	0.480	11.62	0.533	10.97
		0.482	11.50	0.538	10.97
		0.484	11.66	0.541	11.06
		0.487	11.49		
2431707+		0.489	11.51	2432094+	
0.333	11.43	0.491	11.60	0.461	11.59
0.335	11.57	0.493	11.63	0.464	11.64
0.338	11.70	0.495	11.60	0.466	11.63
0.340	11.48	0.497	11.60	0.469	11.55
0.342	11.58	0.499	11.58	0.472	11.61
0.344	11.51	0.501	11.69	0.475	11.62
0.346	11.44	0.503	11.60	0.483	11.55
0.348	11.50	0.505	11.54	0.486	11.67
0.350	11.53	0.507	11.78	0.489	11.55
0.352	11.56	0.509	11.76	0.491	11.54
0.356	11.42	0.512	11.55	0.494	11.51
0.359	11.60	0.514	11.52	0.497	11.62
0.363	11.49	0.516	11.49	0.500	11.67
0.366	11.41	0.518	11.43	0.502	11.55
0.369	11.55	0.520	11.60	0.505	11.67
0.373	11.47	0.522	11.56	0.510	11.62
0.376	11.40	0.524	11.40	0.514	11.76
0.380	11.41	0.526	11.40	0.516	11.50
0.383	11.51	0.528	11.60		
0.387	11.43	0.530	11.40	2432095+	
0.394	11.57	0.532	11.52	0.397	11.32
0.397	11.43	0.534	11.73	0.400	11.21
0.404	11.33			0.403	11.39
0.408	11.43	2432092+		0.405	11.28
0.411	11.25	0.416	11.63	0.408	11.50
0.415	11.47	0.418	11.38	0.411	11.30
0.418	11.49	0.421	11.45	0.414	11.31
0.422	11.48	0.424	11.49	0.416	11.44
0.425	11.48				
0.429	11.43				

Table II (cont.)

J.D.	m	J.D.	m	J.D.	m
2432095+		2432441+		2432444+	
0.419	11.36	0.402	11.50	0.546	11.54
0.422	11.42	0.405	11.55	0.549	11.47
0.459	11.38	0.408	11.66	0.557	11.55
2432097+		0.411	11.45	0.559	11.55
0.391	11.58	0.413	11.45	0.571	11.60
0.394	11.72	0.416	11.50	0.573	11.49
0.398	11.60	0.419	11.60	0.585	11.62
0.401	11.51	0.422	11.54	0.588	11.58
0.405	11.70	0.424	11.62	0.591	11.50
0.408	11.69	0.427	11.65	2432466+	
0.412	11.63	0.430	11.45	0.276	11.48
0.415	11.64	0.433	11.58	0.279	11.56
0.419	11.59	0.436	11.67	0.282	11.60
0.422	11.74	0.438	11.70	0.285	11.42
0.470	11.67	0.488	11.57	0.287	11.38
0.473	11.59	0.491	11.67	0.308	11.60
0.476	11.51	0.494	11.80	0.311	11.50
0.479	11.71	0.536	11.53	0.317	11.36
0.482	11.63	0.538	11.65	0.319	11.46
0.487	11.76	0.543	11.61	0.360	11.52
0.493	11.75	0.581	11.74	0.362	11.60
0.496	11.85	0.584	11.38	0.365	11.58
0.526	11.40	0.587	11.63	0.368	11.50
0.531	11.43	0.590	11.46	0.404	11.70
0.534	11.62	0.602	11.45	2432467+	
0.537	11.75	0.605	11.48	0.248	11.70
0.540	11.80	0.608	11.40	0.251	11.56
2432421+		2432444+		0.254	11.70
0.395	11.45	0.335	11.45	0.257	11.66
0.398	11.45	0.338	11.46	0.259	11.60
0.401	11.33	0.341	11.35	0.290	11.49
0.404	11.60	0.344	11.40	0.294	11.45
0.430	11.45	0.346	11.38	0.297	11.55
0.433	11.60	0.349	11.45	0.326	11.43
0.436	11.66	0.352	11.35	0.329	11.26
0.439	11.65	0.355	11.42	0.332	10.92
0.454	11.69	0.357	11.49	0.334	11.11
0.459	11.65	0.363	11.45	0.337	11.05
0.462	11.80	0.366	11.48	0.347	10.63
0.504	11.80	0.369	11.46	0.350	10.30
0.507	11.75	0.513	11.60	0.352	10.33
2432441+		0.516	11.33	0.355	10.40
0.394	11.49	0.525	11.64	0.358	10.32
0.399	11.60	0.528	11.70	0.361	10.26
		0.536	11.40	0.364	10.24
		0.539	11.40		

Table II (cont.)

J.D.	m	J.D.	m	J.D.	m
2432467+		2432469+		2432474+	
0.366	10.21	0.520	10.38	0.470	11.40
0.422	10.40	0.523	10.39	0.473	11.19
0.425	10.49	0.526	10.41	0.476	11.32
0.427	10.29	0.529	10.46	0.481	11.20
0.430	10.52	0.531	10.53	0.484	11.35
0.433	10.60	0.534	10.47	0.493	11.20
0.439	10.62	0.537	10.50	0.495	11.20
0.441	10.60	0.540	10.51	0.498	11.23
0.444	10.60	0.542	10.56	0.501	11.20
0.447	10.60	0.545	10.62	0.504	11.20
0.450	10.74			0.506	11.25
0.452	10.60	2432472+		0.509	11.20
0.455	10.60	0.287	11.29	0.512	11.20
0.458	10.60	0.290	11.26	0.515	11.33
0.461	10.80	0.293	11.13	0.517	11.38
		0.295	11.32	0.520	11.27
2432469+		0.298	11.27	0.523	11.20
0.435	11.33	0.304	11.33	0.526	11.28
0.438	11.13	0.306	11.23	0.529	11.28
0.441	11.20	0.309	11.26	0.531	11.21
0.444	10.99	0.312	11.24	0.534	11.20
0.447	11.08	0.315	11.34	0.537	11.22
0.449	10.91	0.318	11.29		
0.452	10.93	0.320	11.20	2432479+	
0.455	10.61	0.324	11.32	0.388	11.38
0.458	10.75	0.329	11.25	0.391	11.48
0.460	10.66	0.331	11.28	0.394	11.33
0.463	10.47			0.397	11.28
0.466	10.49	2432474+		0.399	11.40
0.469	10.23	0.418	11.39	0.402	11.38
0.472	10.50	0.420	11.39	0.405	11.36
0.474	10.22	0.423	11.39	0.408	11.38
0.477	10.18	0.426	11.44	0.410	11.33
0.480	10.21	0.429	11.30	0.413	11.21
0.484	10.25	0.431	11.45	0.416	11.26
0.487	10.22	0.434	11.40	0.419	11.20
0.490	10.20	0.437	11.38	0.422	11.24
0.492	10.22	0.443	11.37	0.424	11.23
0.495	10.20	0.445	11.30	0.427	11.24
0.498	10.18	0.448	11.35	0.430	11.20
0.501	10.20	0.451	11.30	0.433	11.20
0.504	10.25	0.454	11.42	0.435	11.15
0.506	10.30	0.456	11.34	0.438	11.18
0.509	10.33	0.459	11.32	0.442	11.14
0.512	10.28	0.462	11.34	0.445	11.12
0.515	10.36	0.465	11.26	0.448	10.81
0.517	10.43	0.467	11.30	0.451	10.95

Table II (cont.)

J.D.	m	J.D.	m	J.D.	m
2432479+		2432764+		2432823+	
0.454	10.91	0.442	11.52	0.330	11.58
0.456	10.95	0.451	11.71	0.335	11.48
0.459	10.73	0.474	11.52	0.340	11.58
0.462	10.75	0.477	11.50	0.346	11.66
0.465	10.67	0.479	11.58	0.349	11.56
0.467	10.50	0.482	11.52	0.352	11.61
0.470	10.60	0.485	11.51	0.357	11.66
0.473	10.66	0.488	11.51	0.360	11.78
0.476	10.60			0.363	11.71
0.479	10.50	2432772+		0.366	11.57
0.481	10.48	0.367	11.51		
0.484	10.57	0.370	11.63	2432824+	
0.487	10.49	0.375	11.43	0.362	11.45
0.490	10.50	0.378	11.41	0.364	11.50
		0.381	11.41	0.367	11.34
		0.383	11.57	0.370	11.38
2432482+		0.386	11.46	0.373	11.40
0.258	11.16	0.389	11.40	0.375	11.30
0.261	11.08	0.392	11.44	0.378	11.08
0.264	11.12	0.395	11.45	0.381	11.13
0.266	11.15	0.397	11.53	0.384	11.29
0.269	11.12	0.400	11.36	0.387	11.27
0.272	11.30	0.403	11.45	0.389	11.11
0.275	11.30	0.406	11.50	0.404	10.77
0.278	11.30	0.408	11.61	0.407	10.55
0.280	11.32	0.411	11.46	0.409	10.60
0.283	11.31	0.414	11.43	0.412	10.30
0.286	11.15	0.417	11.52	0.415	10.32
0.289	11.16	0.420	11.39	0.418	10.22
		0.422	11.39	0.421	10.23
2432761+		0.425	11.38	0.423	10.20
0.400	11.50	0.428	11.37	0.426	10.20
0.402	11.32	0.431	11.32	0.429	10.20
0.406	11.54	0.436	11.22	0.434	10.12
0.409	11.38	0.439	11.23	0.437	10.26
0.412	11.32	0.442	11.34	0.440	10.21
0.415	11.51	0.445	11.36	0.446	10.28
0.418	11.55	0.447	11.20	0.451	10.29
0.420	11.38	0.450	11.21	0.454	10.27
0.423	11.45	0.453	11.35	0.457	10.29
0.426	11.45	0.456	11.23	0.459	10.29
		0.461	11.27	0.462	10.31
2432764+				0.465	10.34
0.420	11.80	2432823+		0.468	10.35
0.423	11.67	0.321	11.70	0.471	10.39
0.429	11.53	0.324	11.68	0.473	10.41
0.434	11.45	0.327	11.64		
0.440	11.57				

Table II (cont.)

J.D.	m	J.D.	m	J.D.	m
2432826+		2432829+		2433085+	
0.406	11.38	0.338	11.13	0.458	10.23
0.409	11.33	0.346	11.22	0.461	10.25
0.421	11.47	0.348	11.08	0.466	10.23
0.453	11.71	0.351	11.11	0.469	10.29
0.456	11.68	0.354	11.27	0.472	10.30
0.459	11.55	0.357	11.08	0.475	10.27
0.464	11.55	0.360	11.18	0.478	10.33
0.467	11.67	0.365	11.33	0.480	10.28
0.470	11.43	0.368	11.23	0.483	10.35
0.473	11.43	0.371	11.20	0.486	10.38
0.475	11.40	0.373	11.35	0.489	10.43
0.479	11.45			0.493	10.43
0.481	11.60			0.497	10.42
		2433075+			
		0.420	10.97		
		0.423	10.83	2433094+	
2432829+		0.425	10.88	0.388	11.45
0.247	11.30	0.428	10.75	0.391	11.45
0.250	11.24	0.431	10.74	0.393	11.52
0.253	11.25	0.434	10.53	0.396	11.42
0.256	11.24	0.441	10.30	0.399	11.50
0.258	11.20	0.443	10.39	0.402	11.40
0.261	11.15	0.446	10.47	0.404	11.50
0.264	11.09	0.449	10.34	0.407	11.45
0.267	11.20	0.452	10.24	0.410	11.45
0.269	11.15	0.455	10.25	0.416	11.45
0.272	11.25	0.461	10.35	0.418	11.42
0.275	11.06	0.464	10.33	0.421	11.54
0.278	11.09	0.467	10.47		
0.280	11.16	0.470	10.40	2433095+	
0.283	11.15	0.473	10.42	0.365	11.27
0.286	11.21	0.475	10.42	0.368	11.23
0.289	11.21			0.370	11.42
0.291	11.33	2433085+		0.373	11.10
0.294	11.35	0.419	10.53	0.376	11.34
0.299	11.29	0.422	10.49	0.379	11.20
0.302	11.23	0.425	10.54	0.382	11.29
0.305	11.11	0.428	10.41	0.385	11.20
0.307	11.29	0.430	10.35	0.388	11.20
0.310	11.25	0.433	10.25	0.390	11.05
0.313	11.37	0.436	10.25	0.393	11.10
0.316	11.27	0.439	10.23	0.396	11.01
0.319	11.20	0.441	10.18	0.399	11.03
0.321	11.37	0.444	10.27	0.401	10.95
0.324	11.27	0.447	10.18	0.404	11.02
0.327	11.23	0.450	10.24	0.407	10.87
0.330	11.01	0.453	10.17	0.410	11.03
0.332	11.11	0.455	10.18	0.417	10.80
0.335	11.09				

Table II (cont.)

J.D.	m	J.D.	m	J.D.	m
2433095+		2433112+		2433124+	
0.420	10.87	0.352	11.18	0.378	11.37
0.423	10.65	0.355	11.26	0.381	11.51
0.448	10.68	0.357	11.20	0.386	11.48
0.451	10.64	0.360	11.18	0.389	11.33
0.454	10.69	0.363	11.05	0.392	11.23
0.456	10.60	0.366	11.27	0.395	11.36
0.459	10.65	0.369	11.20	0.397	11.34
0.462	10.71	0.371	11.20	0.400	11.33
0.464	10.77	0.374	11.23	0.406	11.33
0.467	10.65	0.377	11.33	0.408	11.32
0.473	10.75	0.380	11.15	0.411	11.39
0.476	10.80	0.382	11.11	0.417	11.24
0.479	10.69	0.385	11.06	0.420	11.29
0.481	10.75	0.391	11.03	0.422	11.23
0.484	10.80	0.394	11.13	0.425	11.14
0.487	10.85	0.399	11.19	0.428	11.38
0.490	10.75	0.413	11.20	0.431	11.15
0.492	10.85	0.418	11.33	0.433	11.20
0.495	10.88	0.421	11.25	0.436	11.34
		0.424	11.29	0.439	11.25
2433097+		0.427	11.10	0.445	11.27
0.460	11.25	0.429	11.30	0.449	11.25
0.463	11.17	0.432	11.28	0.453	11.23
0.466	11.27	0.435	11.14	0.456	11.25
0.469	11.10	0.438	11.09	0.458	11.18
0.472	11.23	0.441	11.35	0.461	11.25
0.474	11.33	0.444	11.25	0.464	11.18
0.477	11.13	0.446	11.30	0.467	11.35
0.480	11.20	0.456	11.20	0.470	11.29
0.483	11.00	0.459	11.30	0.492	11.47
0.486	11.15	0.465	11.24	0.495	11.33
0.488	11.05	0.471	11.23	0.515	11.38
0.491	11.07	0.475	11.20	0.519	11.35
0.497	11.25				
0.499	11.13	2433124+		2433126+	
0.502	11.15	0.342	11.38	0.411	11.53
0.505	11.16	0.345	11.41	0.414	11.41
0.507	11.17	0.350	11.37	0.417	11.61
0.510	11.11	0.353	11.33	0.419	11.21
0.518	10.91	0.356	11.42	0.425	11.45
0.523	10.98	0.358	11.29	0.428	11.45
0.526	10.93	0.361	11.39	0.431	11.43
0.529	10.97	0.364	11.31	0.433	11.45
0.531	10.80	0.367	11.45	0.436	11.64
		0.370	11.37	0.442	11.58
2433112+		0.372	11.27	0.444	11.65
0.349	11.20	0.375	11.27	0.447	11.36

Table II (cont.)

J.D.	m	J.D.	m	J.D.	m
2433126+		2433134+		2433149+	
0.450	11.58	0.446	10.94	0.440	11.27
0.458	11.35	0.448	11.12	0.443	11.12
0.477	11.15	0.451	11.00	0.445	10.86
0.480	11.30	0.459	10.97	0.448	10.83
0.483	11.25	0.462	11.06	0.451	10.87
0.485	11.07	0.465	11.11	0.454	10.65
0.488	11.20	0.468	11.16	0.456	10.60
0.491	11.22	0.471	11.19	0.459	10.56
0.494	11.10	0.473	11.19	0.462	10.39
0.498	11.18	0.476	11.10	0.465	10.29
0.502	11.20	0.479	11.11	0.468	10.37
0.505	11.20	0.482	11.18	0.470	10.27
0.508	11.19	0.489	11.24	0.473	10.21
0.511	11.17	0.492	11.24	0.476	10.23
0.513	11.13	0.494	11.35	0.479	10.26
0.516	11.25	0.497	11.29	0.481	10.25
0.519	11.22	0.500	11.22	0.493	10.18
0.522	11.04	0.503	11.35	0.496	10.28
0.524	11.17	0.506	11.14	0.499	10.22
0.530	11.02	0.508	11.30	0.502	10.22
		0.519	11.48	0.504	10.25
		0.524	11.24	0.507	10.31
		0.528	11.28	0.510	10.27
2433134+		0.540	11.36	0.513	10.28
0.348	11.32	0.543	11.22	0.515	10.40
0.350	11.18	0.554	11.40	0.518	10.34
0.353	11.20	0.557	11.29	0.521	10.44
0.356	11.12			0.524	10.52
0.359	11.10	2433149+		0.527	10.34
0.362	11.10	0.379	11.52	0.529	10.59
0.364	11.00	0.383	11.56	0.532	10.43
0.367	11.11	0.387	11.58	0.535	10.51
0.370	11.15	0.390	11.49	0.538	10.57
0.373	11.14	0.393	11.46	0.540	10.66
0.375	10.80	0.395	11.60	0.543	10.57
0.378	10.90	0.398	11.53	0.546	10.65
0.378	10.90	0.401	11.60	0.549	10.59
0.399	10.93	0.404	11.52	0.552	10.73
0.402	11.00	0.406	11.55	0.554	10.67
0.405	10.90	0.409	11.35	0.557	10.73
0.407	10.93	0.412	11.48		
0.410	10.86	0.415	11.36	2433161+	
0.413	10.87	0.419	11.46	0.477	11.50
0.416	11.09	0.423	11.43	0.479	11.49
0.419	11.13	0.426	11.40	0.482	11.49
0.421	11.05	0.434	11.30	0.485	11.55
0.424	11.10	0.437	11.26	0.488	11.45
0.427	11.06				
0.430	11.03				
0.443	10.87				



Table II (cont.)

J.D.	m	J.D.	m	J.D.	m
2433161+		2433183+		2433184+	
0.491	11.49	0.548	11.41	0.331	11.13
0.493	11.32	0.551	11.32	0.334	11.17
0.499	11.57	0.554	11.42	0.337	11.20
0.502	11.48	0.556	11.36	0.340	11.22
0.504	11.51	0.559	11.41	0.343	11.24
0.507	11.45	0.562	11.32	0.345	11.30
0.510	11.45	0.565	11.32	0.348	11.20
0.513	11.50	0.569	10.98	0.351	11.29
0.516	11.31	0.573	10.92	0.354	11.20
0.532	11.17	0.576	10.85		
0.535	11.24	0.579	10.62	2433189+	
0.539	11.21	0.581	10.52	0.255	11.30
0.543	11.09	0.584	10.54	0.258	11.46
0.546	11.16	0.587	10.36	0.261	11.46
0.550	11.13	0.590	10.32	0.263	11.24
0.554	11.09	0.594	10.32	0.266	11.33
0.560	11.10	0.598	10.24	0.269	11.33
0.563	11.00	0.601	10.21	0.272	11.46
0.566	10.83	0.604	10.20	0.283	11.42
0.568	11.04	0.606	10.21	0.286	11.40
0.571	10.73	0.609	10.19	0.291	11.45
0.574	10.57	0.612	10.16	0.294	11.41
0.577	10.80	0.615	10.23	0.297	11.40
0.579	10.57	0.618	10.22	0.300	11.48
0.582	10.52			0.302	11.36
0.585	10.61	2433184+		0.305	11.45
0.588	10.50	0.253	10.93	0.308	11.43
0.591	10.40	0.258	10.91	0.311	11.25
0.593	10.49	0.261	10.88	0.313	11.41
0.596	10.53	0.264	10.92	0.316	11.38
0.599	10.45	0.267	10.91	0.319	11.35
0.602	10.48	0.270	10.95	0.325	11.24
0.604	10.54	0.272	11.04	0.327	11.07
0.609	10.46	0.275	10.92	0.330	11.23
		0.278	11.03	0.333	11.17
		0.281	10.86	0.336	11.02
2433179+		0.283	10.80	0.338	11.13
0.283	11.50	0.290	11.03	0.341	11.20
0.286	11.51	0.293	11.00	0.344	11.17
		0.298	11.08	0.347	11.01
2433183+		0.301	10.94	0.350	11.09
0.529	11.53	0.304	11.03	0.352	11.10
0.532	11.50	0.309	11.03	0.355	11.16
0.534	11.56	0.315	11.20	0.358	11.01
0.537	11.51	0.318	11.09	0.361	10.94
0.540	11.48	0.320	11.20	0.366	10.91
0.543	11.53	0.323	11.13	0.369	11.03
0.545	11.42				

Table II (cont.)

J.D.	m	J.D.	m	J.D.	m
2433189+		2433211+		2433248+	
0.374	10.87	0.405	10.50	0.244	11.29
		0.408	10.56	0.248	11.25
2433201+		0.411	10.46	0.253	11.19
0.311	11.40	0.413	10.63	0.255	10.99
0.313	11.45	0.416	10.53	0.258	11.04
0.316	11.07			0.261	11.07
0.319	11.23	2433213+		0.264	11.09
0.322	11.37	0.422	11.53	0.266	11.11
0.325	11.11	0.425	11.56	0.272	11.02
0.327	11.18	0.428	11.52	0.275	10.89
0.330	11.22	0.431	11.46	0.278	10.84
		0.433	11.53	0.280	10.85
2433211+		0.436	11.49	0.283	10.88
0.290	11.64	0.443	11.43	0.286	10.80
0.293	11.47	0.447	11.53	0.289	10.80
0.295	11.48	0.450	11.50	0.291	10.75
0.298	11.36	0.454	11.33		
0.301	11.50	0.458	11.36	2433452+	
0.304	11.54	0.463	11.20	0.429	11.14
0.306	11.59	0.467	11.20	0.432	11.10
0.309	11.40	0.469	11.18	0.435	11.13
0.315	11.51	0.478	11.11	0.438	11.10
0.318	11.58	0.481	10.93	0.440	11.11
0.320	11.68	0.483	10.74	0.443	11.01
0.323	11.61	0.486	10.78	0.446	11.13
0.326	11.59	0.489	10.85	0.449	11.24
0.338	11.22	0.492	10.77	0.451	11.12
0.341	11.28	0.494	10.77	0.454	11.08
0.344	11.35	0.497	10.60	0.457	11.20
0.347	11.27	0.500	10.50	0.459	11.16
0.349	11.30	0.503	10.57	0.463	11.03
0.355	11.25	0.506	10.43	0.465	11.01
0.358	11.20	0.508	10.45	0.468	11.02
0.361	11.20	0.511	10.45	0.471	11.08
0.363	11.17	0.514	10.37	0.474	10.98
0.366	11.13	0.517	10.50	0.476	11.07
0.369	10.97	0.519	10.47	0.479	10.91
0.372	10.97	0.522	10.42	0.482	10.97
0.376	10.90	0.525	10.33	0.488	10.84
0.383	10.83	0.528	10.34	0.491	10.89
0.386	10.73	0.531	10.38	0.494	10.91
0.388	10.74	0.533	10.40	0.497	10.85
0.391	10.65	0.536	10.44	0.499	10.90
0.394	10.62	0.539	10.49	0.502	10.90
0.397	10.55	0.542	10.49	0.505	10.74
0.399	10.60	0.544	10.54	0.508	10.86
0.402	10.66			0.510	10.87

Table II (cont.)

J.D.	m	J.D.	m	J.D.	m
2433452+		2433484+		2433485+	
0.516	10.79	0.436	11.56	0.369	11.72
0.519	10.69	0.438	11.36	0.372	11.73
0.522	10.80	0.441	11.31	0.375	11.59
0.524	10.73	0.444	11.42	0.377	11.69
0.527	10.88	0.447	11.47	0.383	11.69
0.530	10.88	0.449	11.47	0.388	11.74
0.533	10.84	0.452	11.50	0.391	11.70
		0.455	11.41	0.397	11.67
		0.458	11.36	0.400	11.69
2433482+		0.461	11.29	0.402	11.68
0.340	11.28	0.463	11.32	0.405	11.79
0.343	11.14	0.468	11.33	0.411	11.61
0.346	11.23	0.473	11.28	0.413	11.66
0.349	11.20	0.477	11.27	0.419	11.68
0.351	11.17	0.480	11.10	0.422	11.80
0.354	11.21	0.483	11.03	0.425	11.61
0.360	11.17	0.486	11.10	0.441	11.72
0.363	11.22	0.488	11.00	0.444	11.73
0.365	11.19	0.491	11.01	0.447	11.80
0.370	11.20	0.495	11.15	0.450	11.73
		0.498	11.00	0.452	11.80
2433484+		0.501	11.04	0.455	11.75
0.353	11.39	0.504	11.06	0.459	11.75
0.355	11.51	0.506	10.98	0.481	11.76
0.358	11.42	0.509	11.02	0.502	11.77
0.361	11.43	0.512	10.91	0.504	11.65
0.365	11.41	0.515	10.87	0.507	11.82
0.365	11.41	0.518	10.95	0.510	11.62
0.372	11.51	0.520	10.93	0.513	11.62
0.375	11.39	0.523	10.93	0.516	11.65
0.380	11.55	0.526	10.80	0.520	11.43
0.383	11.55	0.529	10.66	0.523	11.63
0.386	11.33	0.531	10.79	0.526	11.52
0.388	11.40	0.534	10.85	0.529	11.43
0.391	11.35	0.540	10.80	0.532	11.53
0.394	11.43	0.543	10.81	0.534	11.38
0.397	11.26	0.545	10.64	0.537	11.39
0.399	11.38	0.548	10.60	0.540	11.35
0.403	11.37	0.551	10.75	0.543	11.26
0.408	11.23	0.554	10.75	0.545	11.44
0.411	11.36			0.548	11.35
0.413	11.38	2433485+		0.551	11.30
0.416	11.42	0.355	11.60	0.557	11.37
0.422	11.40	0.358	11.43	0.559	11.46
0.424	11.48	0.361	11.65		
0.427	11.40	0.363	11.57	2433504+	
0.430	11.31	0.366	11.73	0.393	11.15
0.433	11.48				

Table II (cont.)

J.D.	m	J.D.	m	J.D.	m
2433504+		2433505+		2433506+	
0.395	11.32	0.423	11.88	0.437	11.62
0.398	11.04	0.426	11.67	0.440	11.53
0.401	11.06	0.429	11.77	0.443	11.51
0.404	11.05	0.432	11.73	0.518	10.76
0.409	10.87	0.434	11.74	0.520	10.71
0.412	10.90	0.437	11.76	0.523	10.67
0.415	10.88	0.440	11.73	0.526	10.53
0.418	10.74	0.443	11.61	0.529	10.72
0.421	10.77	0.445	11.70	0.532	10.60
0.423	10.72	0.448	11.80	0.534	10.54
0.426	10.61	0.454	11.72	0.537	10.55
0.429	10.67	0.457	11.73	0.540	10.40
0.432	10.50	0.459	11.70	0.543	10.26
0.434	10.51	0.462	11.79	0.545	10.33
0.437	10.60	0.465	11.60	0.548	10.39
0.440	10.62	0.468	11.70	0.551	10.40
0.443	10.63	0.470	11.60	0.554	10.36
0.445	10.62	0.473	11.62	0.558	10.32
0.448	10.52	0.476	11.66	0.562	10.38
0.451	10.50	0.479	11.73	0.565	10.40
0.454	10.63	0.482	11.75	0.568	10.42
		0.484	11.72	0.570	10.49
		0.487	11.80	0.573	10.40
2433505+		0.490	11.55	0.576	10.50
0.345	11.71	0.525	11.75	0.579	10.41
0.347	11.57	0.530	11.62	0.582	10.58
0.350	11.63	0.533	11.62	0.584	10.63
0.353	11.73	0.536	11.56	0.587	10.50
0.356	11.75	0.538	11.53		
0.359	11.65	0.541	11.60	2433507+	
0.361	11.78	0.552	11.65	0.354	11.26
0.364	11.77	0.557	11.77	0.357	11.23
0.367	11.78	0.559	11.77	0.359	11.23
0.371	11.76	0.562	11.65	0.362	11.43
0.375	11.80	0.565	11.70	0.365	11.23
0.378	11.67	0.568	11.62	0.368	11.30
0.381	11.78	0.570	11.57	0.370	11.32
0.384	11.74	0.573	11.54	0.373	11.50
0.386	11.71	0.576	11.62	0.376	11.33
0.389	11.77	0.579	11.50	0.379	11.45
0.392	11.63	0.582	11.62	0.382	11.58
0.395	11.75	0.584	11.67	0.387	11.42
0.397	11.77	0.587	11.60	0.391	11.35
0.400	11.72	0.590	11.50	0.395	11.54
0.406	11.59			0.398	11.41
0.415	11.62	2433506+		0.401	11.44
0.418	11.73	0.434	11.48	0.404	11.40
0.420	11.71				

Table II (cont.)

J.D.	m	J.D.	m	J.D.	m
2433507+		2433507+		2433511+	
0.407	11.25	0.579	11.68	0.504	11.10
0.409	11.42	0.585	11.52	0.507	11.03
0.412	11.47	0.588	11.65		
0.415	10.92	0.591	11.77	2433514+	
0.420	11.40			0.340	11.34
0.434	11.36	2433511+		0.343	11.22
0.437	11.55	0.373	11.20	0.346	11.23
0.440	11.68	0.379	11.20	0.348	11.40
0.443	11.51	0.382	11.00	0.351	11.34
0.445	11.53	0.384	11.15	0.354	11.13
0.448	11.52	0.387	11.18	0.357	11.22
0.451	11.56	0.390	11.04	0.359	11.30
0.454	11.66	0.393	11.17	0.362	11.23
0.458	11.59	0.395	11.13	0.365	11.16
0.462	11.70	0.398	11.09	0.368	11.18
0.465	11.57	0.401	11.15	0.371	11.26
0.468	11.62	0.404	11.09	0.373	11.18
0.473	11.60	0.407	11.01	0.376	11.34
0.476	11.64	0.409	11.13	0.379	11.20
0.479	11.65	0.412	11.07	0.382	11.24
0.482	11.63	0.415	11.20	0.384	11.20
0.484	11.49	0.418	11.10	0.389	11.18
0.487	11.69	0.421	11.12	0.393	11.20
0.490	11.65	0.423	11.12	0.396	11.09
0.493	11.60	0.426	11.13	0.398	11.05
0.495	11.67	0.429	11.13	0.401	11.11
0.498	11.62	0.437	11.07	0.404	11.12
0.501	11.62	0.440	11.04	0.407	11.01
0.504	11.61	0.443	11.11	0.423	11.12
0.524	11.64	0.446	11.01	0.426	11.06
0.527	11.64	0.448	11.06	0.429	11.08
0.529	11.73	0.451	11.00	0.432	10.99
0.535	11.60	0.454	11.13	0.434	10.97
0.538	11.58	0.460	11.09	0.437	10.87
0.541	11.46	0.465	11.08	0.440	10.92
0.543	11.63	0.468	11.16	0.443	10.89
0.546	11.67	0.470	11.10	0.446	10.96
0.549	11.52	0.473	11.02	0.448	10.90
0.552	11.68	0.476	11.18	0.451	10.85
0.554	11.70	0.479	11.13	0.454	10.84
0.557	11.60	0.482	11.21	0.457	10.90
0.563	11.73	0.484	11.06	0.459	10.97
0.566	11.66	0.489	11.11	0.462	10.95
0.568	11.62	0.493	11.10	0.465	10.88
0.571	11.76	0.495	11.17	0.468	11.03
0.574	11.55	0.498	11.09	0.471	11.02
0.577	11.60	0.501	11.15	0.473	11.00

Table II (cont.)

J.D.	m	J.D.	m	J.D.	m
2433514+		2433536+		2433536+	
0.476	11.01	0.330	11.45	0.494	10.83
0.479	11.00	0.332	11.43	0.496	10.91
0.482	11.00	0.335	11.50	0.499	10.85
0.484	10.99	0.338	11.54	0.502	10.82
0.487	11.00	0.344	11.43	0.505	10.78
0.490	11.03	0.346	11.51	0.507	10.83
0.493	10.98	0.349	11.50	0.510	10.74
0.496	11.00	0.352	11.56	0.513	10.92
0.498	11.08	0.355	11.43	0.516	10.90
		0.357	11.52	0.519	10.36
2433516+		0.360	11.52	0.521	10.97
0.464	11.25	0.363	11.35	0.524	11.07
0.466	11.37	0.366	11.43	0.527	11.02
0.469	11.30	0.369	11.48	0.530	10.88
0.472	11.33	0.380	11.22	0.532	10.90
0.475	11.35	0.382	11.32		
0.478	11.30	0.385	11.34	2433537+	
0.483	11.40	0.388	11.27	0.414	11.77
0.486	11.35	0.391	11.34	0.417	11.80
0.489	11.27	0.394	11.14	0.423	11.71
0.491	11.30	0.396	11.22	0.426	11.78
0.494	11.27	0.399	11.25	0.428	11.75
0.497	11.20	0.402	11.12	0.431	11.74
0.503	11.23	0.405	11.02	0.434	11.77
0.505	11.18	0.407	11.19	0.437	11.84
0.508	11.21	0.410	11.14	0.438	11.79
0.511	11.24	0.416	10.90	0.441	11.78
0.514	11.16	0.421	10.97	0.444	11.72
0.516	11.12	0.424	11.04	0.446	11.68
0.519	11.09	0.432	10.92	0.449	11.72
0.522	11.09	0.435	10.87	0.452	11.72
0.525	11.06	0.438	10.90	0.455	11.75
0.537	10.98	0.441	10.90	0.454	11.74
0.543	11.04	0.444	10.84	0.457	11.71
0.545	10.97	0.446	10.62	0.470	11.79
0.548	10.82	0.449	10.80	0.473	11.79
0.551	10.83	0.452	10.71	0.476	11.79
0.557	10.88	0.455	10.87	0.479	11.83
0.560	10.78	0.458	10.74	0.481	11.79
0.568	10.98	0.461	10.80	0.484	11.79
0.571	10.80	0.463	10.68	0.487	11.72
0.573	10.97	0.466	10.65	0.489	11.73
		0.469	10.68	0.492	11.82
2433536+		0.471	10.69	0.495	11.68
0.321	11.62	0.482	10.63	0.498	11.60
0.324	11.48	0.486	10.74	0.501	11.60
0.327	11.48	0.491	10.80	0.503	11.69

Table II (cont.)

J.D.	m	J.D.	m	J.D.	m
2433537+		2433538+		2433545+	
0.506	11.74	0.517	11.15	0.352	11.70
0.509	11.70	0.520	11.20		
0.512	11.71	0.523	11.12	2433562+	
0.519	11.73	0.526	11.02	0.227	11.27
0.521	11.76	0.529	11.05	0.230	11.38
0.524	11.78	0.531	10.91	0.233	11.37
0.527	11.71	0.534	10.90	0.236	11.24
0.530	11.61	0.537	10.70	0.238	11.29
0.532	11.71	0.540	10.85	0.241	11.42
0.535	11.64	0.542	10.72	0.244	11.22
0.538	11.75	0.545	10.70	0.247	11.26
0.541	11.75	0.548	10.63	0.250	11.36
0.544	11.67	0.554	10.46	0.252	11.40
0.546	11.65	0.556	10.45	0.255	11.39
0.549	11.64	0.559	10.46	0.258	11.41
0.552	11.62	0.562	10.43	0.261	11.63
0.555	11.65	0.565	10.55	0.263	11.43
0.557	11.59	0.567	10.58	0.266	11.30
0.560	11.67	0.574	10.62	0.269	11.26
0.563	11.73	0.577	10.56	0.272	11.28
0.579	11.58	0.580	10.59	0.275	11.49
0.582	11.64	0.583	10.40	0.277	11.46
0.585	11.64	0.585	10.50	0.280	11.43
0.588	11.57	0.588	10.54		
0.591	11.55	0.594	10.40	2433563+	
0.594	11.47	0.597	10.60	0.227	11.66
0.596	11.51	0.599	10.56	0.230	11.51
0.599	11.50	0.602	10.52	0.233	11.66
0.602	11.52	0.605	10.52	0.236	11.80
0.605	11.46	0.608	10.53	0.238	11.65
0.607	11.62	0.610	10.61	0.241	11.76
0.610	11.50	0.613	10.68	0.244	11.60
0.613	11.46	0.616	10.76	0.250	11.60
0.616	11.38	0.619	10.78	0.252	11.50
0.619	11.55	0.622	10.71	0.255	11.51
0.621	11.41	0.624	10.71	0.258	11.69
0.624	11.25	0.627	10.79	0.261	11.65
0.627	11.33	0.630	10.66	0.263	11.51
0.630	11.38			0.266	11.55
		2433545+		0.269	11.70
2433538+		0.327	11.73	0.272	11.60
0.501	11.34	0.329	11.70	0.275	11.66
0.504	11.28	0.332	11.77	0.277	11.57
0.507	11.28	0.336	11.68	0.283	11.42
0.509	11.09	0.340	11.75	0.286	11.40
0.512	11.20	0.346	11.69	0.288	11.50
0.515	11.17	0.349	11.68	0.291	11.40

Table II (cont.)

J.D.	m	J.D.	m	J.D.	m
2433563+		2433563+		2433564+	
0.294	11.38	0.438	10.89	0.308	11.20
0.297	11.30	0.441	10.94	0.311	11.13
0.300	11.38	0.444	10.95	0.313	11.11
0.302	11.33	0.447	10.92	0.316	11.32
0.305	11.25	0.450	11.01	0.319	11.12
0.308	11.23	0.452	11.11	0.322	11.20
0.311	11.32	0.461	10.96	0.325	11.33
0.313	11.12	0.463	11.01	0.327	11.27
0.316	11.05	0.466	10.97	0.330	11.28
0.319	10.90	0.469	11.09	0.333	11.37
0.322	11.00	0.472	10.97	0.336	11.37
0.325	10.73	0.475	11.07	0.338	11.22
0.327	10.72	0.477	11.20	0.341	11.22
0.330	10.60	0.480	11.18	0.347	11.29
0.333	10.70	0.483	11.23	0.350	11.15
0.338	10.60	0.486	11.15	0.352	11.22
0.341	10.63	0.488	11.28	0.363	11.42
0.344	10.40	0.490	11.16	0.366	11.37
0.347	10.36	0.494	11.16	0.369	11.43
0.350	10.42	0.497	11.27	0.372	11.27
0.352	10.26	0.500	11.23	0.375	11.53
0.355	10.28	0.502	11.27	0.377	11.41
0.358	10.20	0.505	11.25	0.380	11.30
0.361	10.30	0.508	11.32	0.383	11.46
0.363	10.37	0.511	11.26	0.386	11.50
0.366	10.33	0.513	11.30	0.388	11.33
0.369	10.42			0.391	11.50
0.372	10.48	2433564+		0.427	11.52
0.375	10.32	0.241	11.36	0.430	11.41
0.377	10.42	0.244	11.38	0.433	11.48
0.380	10.32	0.247	11.33	0.436	11.50
0.383	10.25	0.250	11.28	0.438	11.46
0.386	10.38	0.252	11.36	0.441	11.41
0.400	10.60	0.255	11.33	0.444	11.34
0.402	10.63	0.258	11.50	0.449	11.51
0.406	10.66	0.261	11.36	0.452	11.52
0.408	10.68	0.275	11.22	0.455	11.50
0.411	10.72	0.277	11.28	0.458	11.38
0.413	10.63	0.280	11.30	0.461	11.48
0.416	10.55	0.283	11.22	0.463	11.62
0.419	10.78	0.286	11.26	0.466	11.51
0.422	10.83	0.288	11.28	0.469	11.62
0.425	10.86	0.291	11.26	0.472	11.54
0.427	10.92	0.294	11.29	0.475	11.58
0.430	10.86	0.297	11.25	0.477	11.62
0.433	10.84	0.302	11.26	0.480	11.39
0.436	10.90	0.305	11.18	0.483	11.52



Table II (cont.)

J.D.	m	J.D.	m	J.D.	m
2433564+		2433566+		2433567+	
0.486	11.43	0.472	11.22	0.425	11.71
0.488	11.49	0.475	11.20	0.427	11.66
0.491	11.52	0.477	11.20	0.430	11.72
0.494	11.47	0.480	11.22	0.436	11.62
0.497	11.57	0.483	11.31	0.438	11.76
0.500	11.54	0.486	11.10	0.441	11.72
0.502	11.51	0.488	11.22	0.444	11.65
		0.491	11.32	0.447	11.70
		0.494	11.30	0.450	11.70
2433566+		0.497	11.47	0.452	11.63
0.350	11.22	0.500	11.27	0.455	11.58
0.352	11.21	0.502	11.30	0.458	11.70
0.355	11.22	0.505	11.39	0.461	11.67
0.361	11.20	0.510	11.38	0.463	11.67
0.363	11.25	0.514	11.45	0.466	11.65
0.366	11.26			0.469	11.78
0.369	11.12	2433567+		0.472	11.68
0.372	11.15	0.325	11.66	0.475	11.77
0.375	11.12	0.327	11.72	0.477	11.62
0.377	11.15	0.330	11.68	0.480	11.63
0.380	11.19	0.333	11.60	0.483	11.56
0.383	11.03	0.336	11.72	0.486	11.64
0.387	11.06	0.340	11.69	0.491	11.62
0.391	11.06	0.344	11.73	0.494	11.70
0.394	11.12	0.349	11.74	0.497	11.67
0.397	11.13	0.352	11.72	0.500	11.74
0.400	11.10	0.355	11.72	0.502	11.64
0.405	11.08	0.358	11.80	0.505	11.68
0.408	11.22	0.362	11.71	0.508	11.67
0.411	11.10	0.366	11.71	0.511	11.52
0.413	11.24	0.369	11.80	0.513	11.65
0.416	11.08	0.372	11.68	0.516	11.55
0.419	11.11	0.380	11.60	0.519	11.49
0.422	11.10	0.383	11.65	0.522	11.47
0.426	11.05	0.386	11.76	0.525	11.47
0.433	11.11	0.388	11.76	0.527	11.40
0.436	11.06	0.391	11.70	0.530	11.48
0.438	11.20	0.397	11.71	0.533	11.36
0.441	11.16	0.400	11.80	0.536	11.33
0.444	10.99	0.402	11.80	0.538	11.47
0.447	11.16	0.405	11.79	0.541	11.33
0.450	11.06	0.408	11.72	0.544	11.35
0.455	11.18	0.411	11.67	0.547	11.16
0.458	11.17	0.413	11.70		
0.461	10.64	0.416	11.68	2433568+	
0.463	11.34	0.419	11.74	0.227	11.48
0.466	11.20	0.422	11.71	0.230	11.43
0.469	11.25				

Table II (cont.)

J.D.	m	J.D.	m	J.D.	m
2433568+		2433568+		2433569+	
0.233	11.51	0.480	11.02	0.230	11.20
0.236	11.62	0.483	11.03	0.233	11.20
0.241	11.43	0.486	10.95	0.236	11.20
0.244	11.42	0.488	10.95	0.238	11.18
0.247	11.42	0.491	10.97	0.241	11.24
0.250	11.49	0.494	11.00	0.244	11.20
0.252	11.49	0.497	10.97	0.247	11.20
0.255	11.46	0.500	10.97	0.250	11.27
0.258	11.53	0.502	10.93	0.252	11.34
0.263	11.49	0.508	10.90	0.255	11.36
0.266	11.37	0.511	10.92	0.258	11.39
0.269	11.39	0.513	10.92	0.261	11.31
0.272	11.55	0.516	10.92	0.263	11.27
0.275	11.57	0.519	10.77	0.266	11.25
0.277	11.53	0.522	10.97	0.269	11.10
0.280	11.60	0.525	10.84	0.475	11.77
0.283	11.62	0.527	11.05	0.477	11.74
0.394	11.50	0.530	10.92	0.480	11.74
0.397	11.37	0.533	10.93	0.483	11.69
0.400	11.44	0.536	11.00	0.486	11.70
0.402	11.46	0.538	10.93	0.488	11.62
0.405	11.45	0.541	10.94	0.491	11.75
0.408	11.26	0.544	10.93	0.494	11.67
0.411	11.46	0.547	11.00	0.497	11.64
0.413	11.29	0.550	10.97	0.500	11.79
0.416	11.28	0.552	11.06	0.502	11.59
0.419	11.26	0.555	11.09	0.505	11.58
0.422	11.37	0.561	11.20	0.508	11.68
0.425	11.20	0.563	11.05	0.511	11.82
0.427	11.31	0.566	11.13	0.513	11.82
0.430	11.31	0.569	11.05	0.516	11.74
0.433	11.20	0.572	11.05	0.519	11.76
0.436	11.17	0.575	11.05	0.522	11.76
0.438	11.25	0.577	11.18	0.525	11.79
0.441	11.18	0.580	11.07	0.527	11.73
0.444	11.17	0.583	11.07	0.536	11.69
0.450	11.07	0.586	11.09	0.538	11.65
0.452	11.17	0.588	11.23	0.541	11.62
0.455	11.05	0.591	11.20	0.544	11.30
0.458	10.99	0.594	11.20	0.547	11.26
0.461	11.08	0.597	11.24	0.550	11.52
0.463	11.00	0.600	11.23	0.552	11.60
0.466	10.94	0.602	11.29	0.555	11.73
0.469	11.06	0.605	11.30	0.558	11.69
0.472	10.94			0.561	11.68
0.475	11.03	2433569+		0.563	11.62
0.477	10.98	0.227	11.32	0.566	11.64

Table II (cont.)

J.D.	m	J.D.	m	J.D.	m
2433569+		2433826+		2433887+	
0.569	11.55	0.375	11.76	0.307	11.38
0.572	11.69			0.310	11.41
0.575	11.68	2433838+		0.313	11.40
0.577	11.68	0.437	11.64	0.316	11.32
0.580	11.65	0.440	11.50	0.318	11.38
0.583	11.71	0.442	11.59	0.321	11.50
0.588	11.55	0.445	11.57	0.324	11.32
0.591	11.60	0.448	11.58	0.327	11.28
0.594	11.62	0.454	11.55	0.330	11.38
0.597	11.56	0.456	11.50	0.332	11.33
0.600	11.72	0.459	11.62	0.335	11.38
0.602	11.57	0.462	11.51	0.338	11.36
0.605	11.62	0.465	11.47	0.341	11.44
0.608	11.65	0.467	11.45	0.343	11.30
0.611	11.56	0.470	11.55	0.346	11.44
0.613	11.70	0.473	11.48	0.349	11.51
0.616	11.65	0.476	11.50	0.352	11.39
0.619	11.52	0.479	11.48		
0.623	11.48	0.481	11.20	2433888+	
0.629	11.58	0.484	11.43	0.310	11.44
0.634	11.44	0.487	11.29	0.313	11.46
0.638	11.42	0.490	11.42	0.319	11.43
0.642	11.49	0.492	11.35	0.324	11.44
		0.495	11.40	0.327	11.44
2433583+		0.498	11.14	0.330	11.37
0.205	11.30	0.501	11.26	0.332	11.33
0.208	11.35	0.504	11.16	0.335	11.26
0.210	11.31	0.506	11.25	0.338	11.20
0.213	11.29	0.509	11.29	0.341	11.32
0.216	11.18	0.512	11.20	0.344	11.18
0.219	11.10	0.515	11.32	0.347	11.44
0.222	11.13	0.517	11.31	0.349	11.40
0.224	10.96	0.520	11.26	0.352	11.26
0.227	10.99	0.524	11.23	0.355	11.34
0.230	10.95	0.529	11.18	0.358	11.32
0.233	11.03	0.534	11.20	0.360	10.94
0.238	10.50	0.537	11.20	0.363	11.06
0.240	10.52	0.540	11.24	0.366	10.89
0.244	10.62	0.543	11.26	0.369	10.80
				0.371	10.88
2433613+		2433887+		0.374	10.68
0.186	10.52	0.291	11.47	0.377	10.59
0.188	10.49	0.293	11.35	0.380	10.57
0.191	10.32	0.296	11.33	0.383	10.57
0.194	10.23	0.299	11.20	0.385	10.44
		0.302	11.39	0.388	10.37
2433826+		0.305	11.36	0.391	10.46
0.370	11.64				

Table II (cont.)

J.D.	m	J.D.	m	J.D.	m
2433888+		2433889+		2433890+	
0.394	10.40	0.349	11.15	0.377	11.62
0.396	10.40	0.358	11.30	0.380	11.63
0.402	10.40	0.360	11.20	0.383	11.71
0.405	10.36	0.363	11.27	0.407	11.46
0.408	10.42	0.366	11.39	0.411	11.64
0.410	10.43	0.369	11.24	0.413	11.55
0.413	10.36	0.372	11.15	0.438	11.48
0.416	10.38	0.374	11.29	0.441	11.55
0.419	10.35	0.377	11.15	0.444	11.44
0.421	10.56	0.408	11.20	0.446	11.59
0.424	10.54	0.410	11.20	0.450	11.59
0.427	10.51	0.413	11.40	0.455	11.44
0.430	10.32	0.416	11.35	0.458	11.51
0.435	10.40	0.419	11.25		
0.438	10.40	0.433	11.40	2433891+	
0.441	10.53	0.435	11.41	0.311	11.44
0.446	10.60	0.438	11.48	0.314	11.55
0.449	10.45	0.443	11.32	0.316	11.49
0.452	10.61	0.447	11.38	0.319	11.40
0.455	10.70	0.449	11.40	0.322	11.59
0.458	10.52	0.452	11.27	0.325	11.46
0.460	10.56	0.455	11.29	0.328	11.35
0.463	10.60	0.458	11.55	0.330	11.48
0.466	10.84	0.460	11.30	0.333	11.56
0.469	10.73	0.465	11.36	0.336	11.41
0.471	10.73	0.472	11.45	0.339	11.39
0.474	10.74	0.474	11.52	0.341	11.50
0.477	10.65	0.477	11.39	0.344	11.37
0.480	10.68	0.480	11.54	0.347	11.50
		0.483	11.48	0.350	11.30
		0.485	11.50	0.353	11.51
2433889+		0.488	11.45	0.355	11.52
0.305	11.40	0.491	11.44	0.358	11.47
0.308	11.40	0.494	11.45	0.361	11.34
0.310	11.32	0.497	11.42	0.364	11.42
0.313	11.35	0.505	11.39	0.366	11.34
0.316	11.27	0.508	11.69	0.369	11.28
0.319	11.37	0.510	11.49	0.372	11.44
0.322	11.23	0.513	11.48	0.375	11.25
0.324	11.34	0.516	11.53	0.378	11.25
0.327	11.26			0.380	11.22
0.330	11.33	2433890+		0.383	11.40
0.333	11.32	0.363	11.57	0.386	11.41
0.336	11.39	0.366	11.53	0.389	11.28
0.338	11.15	0.369	11.53	0.391	11.20
0.341	11.39	0.372	11.56	0.394	11.25
0.344	11.27	0.374	11.67	0.397	11.29
0.347	11.28				

Table II (cont.)

J.D.	m	J.D.	m	J.D.	m
2433891+		2433891+		2433898+	
0.400	11.25	0.564	11.37	0.373	10.82
0.402	11.28	0.566	11.43	0.376	10.80
0.408	11.25	0.569	11.44	0.379	10.80
0.411	11.24	0.572	11.38	0.382	10.80
0.414	11.17	0.575	11.44	0.387	10.94
0.416	11.11	0.577	11.39	0.390	10.93
0.419	11.30	0.580	11.43	0.393	10.82
0.422	11.30	0.589	11.44	0.395	10.77
0.425	11.20	0.593	11.41	0.401	10.96
0.427	11.24	0.597	11.42	0.404	10.88
0.430	11.29	0.600	11.50	0.407	10.79
0.433	11.19	0.602	11.34	0.409	10.82
0.436	11.16	0.605	11.40	0.412	10.72
0.439	11.05	0.608	11.40	0.415	10.77
0.441	11.15	0.611	11.44	0.418	10.84
0.444	11.20	0.614	11.46	0.420	10.97
0.447	11.10	0.616	11.51	0.423	10.93
0.453	11.16	0.619	11.48	0.426	10.90
0.461	11.23			0.429	10.95
0.464	11.23	2433898+		0.432	10.84
0.476	11.23	0.295	11.19	0.434	11.04
0.481	11.20	0.298	11.28	0.437	11.01
0.486	11.39	0.301	11.38	0.440	10.93
0.489	11.32	0.304	11.32	0.443	10.92
0.491	11.31	0.307	11.31	0.446	11.05
0.497	11.30	0.309	11.20	0.448	10.97
0.500	11.38	0.315	11.22	0.451	10.97
0.502	11.37	0.318	11.25	0.453	11.09
0.505	11.43	0.320	11.12	0.457	11.10
0.508	11.30	0.323	11.34	0.459	11.13
0.511	11.27	0.326	11.26		
0.514	11.25	0.329	11.12	2433900+	
0.516	11.23	0.332	11.19	0.437	11.28
0.519	11.20	0.334	11.20	0.440	11.24
0.522	11.24	0.337	11.12	0.443	11.30
0.525	11.40	0.340	11.12	0.446	11.29
0.527	11.32	0.343	11.16	0.449	11.08
0.530	11.20	0.345	11.22	0.451	11.03
0.533	11.31	0.348	11.00	0.454	11.03
0.536	11.35	0.351	11.02	0.457	11.03
0.541	11.37	0.354	10.98	0.460	10.97
0.544	11.30	0.357	11.08	0.462	11.04
0.547	11.25	0.359	10.97	0.465	11.00
0.550	11.30	0.362	10.92	0.468	11.10
0.552	11.24	0.365	10.73	0.475	10.98
0.555	11.25	0.368	10.88	0.481	10.85
0.558	11.24	0.371	10.82	0.485	10.95

Table II (cont.)

J.D.	m	J.D.	m	J.D.	m
2433900+		2433924+		2433924+	
0.487	10.92	0.383	11.70	0.558	11.42
0.490	10.97	0.386	11.62	0.561	11.48
0.493	10.80	0.389	11.70	0.564	11.57
0.496	10.84	0.391	11.60	0.566	11.56
0.499	10.78	0.394	11.68	0.569	11.64
0.501	10.95	0.397	11.69	0.572	11.58
0.504	10.98	0.400	11.72	0.575	11.51
0.507	10.91	0.403	11.71	0.578	11.41
0.510	10.90	0.405	11.68	0.581	11.42
0.512	10.89	0.408	11.70	0.584	11.46
0.515	10.99	0.414	11.76	0.589	11.44
0.518	10.85	0.416	11.65	0.591	11.44
0.521	10.87	0.422	11.76	0.594	11.34
0.524	10.89	0.441	11.84	0.597	11.40
0.529	10.95	0.444	11.75	0.600	11.36
0.532	10.84	0.447	11.66	0.603	11.28
0.535	10.80	0.449	11.59	0.605	11.18
0.546	10.97	0.452	11.60	0.608	11.14
0.549	10.82	0.455	11.74	0.611	11.09
0.551	10.92	0.458	11.72	0.614	10.95
0.554	10.97	0.469	11.68	0.616	10.92
0.557	10.92	0.475	11.62	0.619	10.97
0.560	10.97	0.478	11.53	0.622	10.82
0.562	10.97	0.480	11.62	0.625	10.95
0.565	10.93	0.483	11.50	0.628	10.52
0.568	11.17	0.489	11.60	0.630	10.56
0.571	10.90	0.491	11.57	0.633	10.68
0.574	11.22	0.494	11.56	0.636	10.59
0.576	11.10	0.505	11.62	0.639	10.40
0.579	11.17	0.508	11.67	0.642	10.38
0.582	11.03	0.511	11.57	0.644	10.44
0.593	11.06	0.514	11.68	0.647	10.41
0.596	11.10	0.516	11.72	0.650	10.42
0.599	11.14	0.519	11.67		
0.601	11.30	0.522	11.64	2433950+	
0.607	11.22	0.525	11.70	0.287	10.84
		0.528	11.70	0.289	10.92
2433920+		0.530	11.62	0.292	10.68
0.333	11.62	0.533	11.64	0.295	10.60
0.336	11.63	0.536	11.71	0.298	10.54
0.338	11.59	0.539	11.75	0.301	10.43
0.341	11.44	0.541	11.54	0.303	10.48
0.344	11.39	0.544	11.49	0.306	10.39
0.347	11.41	0.547	11.55	0.309	10.33
0.350	11.40	0.550	11.53	0.312	10.30
0.352	11.22	0.553	11.67	0.315	10.24
0.355	11.32	0.555	11.66	0.320	10.32

Table II (cont.)

J.D.	m	J.D.	m	J.D.	m
2433950+		2433980+		2434192+	
0.323	10.26	0.226	10.25	0.424	11.53
0.326	10.28	0.229	10.30	0.427	11.43
0.328	10.24	0.232	10.29	0.430	11.55
0.338	10.26	0.235	10.32	0.432	11.37
0.341	10.29	0.237	10.38	0.435	11.44
0.344	10.43			0.438	11.48
0.346	10.33	2433982+		0.441	11.53
0.349	10.38	0.263	11.27	0.444	11.63
0.352	10.48	0.266	11.38	0.449	11.43
0.355	10.53	0.268	11.29	0.452	11.49
0.358	10.37	0.271	11.34	0.455	11.48
0.360	10.39	0.274	11.31	0.457	11.44
0.363	10.56	0.280	11.11	0.460	11.44
0.366	10.43	0.282	11.34	0.463	11.53
0.369	10.49	0.285	11.20	0.466	11.43
2433970+		0.288	11.08	0.469	11.41
0.193	11.02	0.291	11.04	0.472	11.40
0.196	10.88	0.294	10.99	0.474	11.58
0.199	10.94	0.296	11.00	0.477	11.42
0.202	10.82	0.299	11.02	0.480	11.40
0.204	10.90	0.302	10.89	0.482	11.41
0.207	10.79	0.305	10.68	0.485	11.44
0.210	10.82	0.307	10.66	0.488	11.44
0.213	10.76	0.310	10.38	0.491	11.44
0.215	10.65	0.313	10.32	0.495	11.45
0.218	10.61	0.316	10.38	0.499	11.42
0.221	10.54	0.318	10.36	0.502	11.42
0.224	10.56	0.321	10.33	0.505	11.36
2433980+		0.324	10.24	0.507	11.45
0.182	11.16	0.327	10.38	0.510	11.39
0.184	10.99	0.330	10.20	0.513	11.37
0.187	10.86	0.355	10.32	0.516	11.49
0.190	10.95	0.358	10.32	0.518	11.44
0.193	10.80	0.360	10.33	0.521	11.43
0.196	10.62	2434192+		2434214+	
0.198	10.56	0.385	11.40	0.383	11.38
0.201	10.58	0.388	11.53	0.386	11.31
0.204	10.45	0.396	11.40	0.389	11.48
0.207	10.53	0.402	11.44	0.392	11.37
0.209	10.38	0.405	11.46	0.394	11.10
0.212	10.32	0.407	11.48	0.397	11.20
0.215	10.50	0.410	11.40	0.400	11.17
0.218	10.31	0.413	11.47	0.403	11.38
0.221	10.35	0.416	11.46	0.406	11.32
0.223	10.34	0.418	11.42	0.408	11.27
		0.421	11.52	0.411	11.40

Table II (cont.)

J.D.	m	J.D.	m	J.D.	m
2434214+		2434215+		2434236+	
0.414	11.24	0.485	11.57	0.390	11.44
0.417	11.33	0.488	11.34	0.393	11.44
0.419	11.53	0.494	11.44	0.395	11.44
0.422	11.36	0.496	11.56	0.398	11.44
0.425	11.27	0.499	11.50	0.401	11.64
0.428	11.39	0.502	11.51	0.404	11.52
0.431	11.32	0.507	11.25	0.406	11.53
0.433	11.37	0.510	11.30	0.409	11.54
0.436	11.34	0.512	11.22	0.412	11.42
0.439	11.49	0.515	11.29	0.415	11.41
0.442	11.47	0.518	11.17	0.420	11.47
0.445	11.23	0.521	11.19	0.426	11.58
0.448	11.44	0.524	11.08	0.429	11.59
0.456	11.36	0.526	10.97	0.434	11.56
0.458	11.50	0.529	10.93	0.437	11.68
0.461	11.25	0.532	10.84	0.440	11.55
0.464	11.30	0.535	10.69	0.443	11.48
0.467	11.50	0.537	10.62	0.445	11.68
0.469	11.34	0.540	10.59	0.448	11.52
0.472	11.30	0.543	10.52	0.451	11.61
0.475	11.36	0.546	10.68	0.454	11.66
0.478	11.40			0.456	11.68
0.481	11.35	2434233+		0.458	11.50
0.483	11.44	0.333	10.38	0.462	11.42
0.489	11.53	0.337	10.33	0.465	11.56
0.494	11.60	0.351	10.27	0.468	11.37
0.497	11.50	0.353	10.29	0.473	11.54
0.500	11.41	0.366	10.31	0.479	11.50
0.503	11.37	0.369	10.40	0.481	11.58
0.506	11.67	0.382	10.48	0.484	11.50
0.508	11.64			0.488	11.56
0.511	11.48	2434236+		0.493	11.59
0.514	11.51	0.338	11.39	0.495	11.47
0.517	11.44	0.340	11.30	0.498	11.43
0.519	11.35	0.343	11.28	0.501	11.56
0.522	11.49	0.347	11.34	0.504	11.52
		0.351	11.44	0.512	11.58
2434215+		0.354	11.40	0.515	11.41
0.458	11.64	0.357	11.31	0.524	11.74
0.460	11.60	0.360	11.30	0.530	11.64
0.463	11.62	0.363	11.43	0.533	11.60
0.466	11.70	0.367	11.41	0.535	11.64
0.469	11.41	0.372	11.44	0.541	11.64
0.471	11.42	0.376	11.52	0.544	11.53
0.474	11.48	0.379	11.50	0.547	11.73
0.477	11.40	0.382	11.36	0.549	11.62
0.482	11.48	0.385	11.52	0.552	11.59



Table II (cont.)

J.D.	m	J.D.	m	J.D.	m
2434236+		2434240+		2434240+	
0.555	11.66	0.330	11.47	0.469	11.34
0.558	11.59	0.333	11.30	0.472	11.34
0.560	11.52	0.336	11.49	0.474	11.29
0.563	11.60	0.339	11.39	0.480	11.40
0.569	11.57	0.341	11.42	0.483	11.22
0.574	11.77	0.344	11.50	0.486	11.28
0.580	11.58	0.347	11.49	0.491	11.16
0.582	11.77	0.350	11.41	0.494	11.30
0.584	11.59	0.352	11.58	0.497	11.24
0.588	11.56	0.358	11.42	0.499	11.30
		0.361	11.35	0.502	11.41
2434237+		0.363	11.50	0.513	11.28
0.505	11.52	0.366	11.41	0.519	11.30
0.512	11.60	0.369	11.45	0.522	11.22
0.514	11.46	0.372	11.16	0.524	11.44
0.517	11.44	0.374	11.20	0.527	11.36
0.520	11.51	0.377	11.34	0.530	11.16
0.523	11.59	0.380	11.32	0.533	11.20
0.526	11.40	0.386	11.40	0.536	11.12
0.528	11.53	0.388	11.44	0.538	11.16
0.531	11.44	0.391	11.32	0.541	11.26
0.534	11.42	0.394	11.48	0.544	11.34
0.537	11.23	0.397	11.39	0.547	11.28
0.539	11.15	0.399	11.36	0.549	11.26
0.545	11.15	0.402	11.38	0.552	11.19
0.554	10.62	0.405	11.48	0.555	11.15
0.556	10.64	0.408	11.35	0.558	11.20
0.559	10.51	0.410	11.52	0.569	11.25
0.562	10.46	0.413	11.25	0.574	11.25
0.564	10.58	0.416	11.49	0.577	11.28
0.567	10.52	0.419	11.26	0.580	11.34
0.570	10.50	0.422	11.38	0.586	11.31
0.573	10.48	0.424	11.27	0.588	11.42
0.576	10.40	0.427	11.34	0.591	11.44
0.578	10.37	0.430	11.42	0.594	11.41
0.581	10.40	0.433	11.40	0.597	11.31
0.584	10.54	0.436	11.41		
0.587	10.34	0.438	11.44	2434243+	
0.589	10.46	0.441	11.44	0.318	10.86
0.592	10.53	0.444	11.33	0.320	10.84
		0.449	11.21	0.323	10.62
2434240+		0.452	11.24	0.326	10.61
0.316	11.27	0.455	11.20	0.329	10.60
0.319	11.55	0.458	11.34	0.331	10.51
0.322	11.36	0.460	11.35	0.334	10.42
0.324	11.49	0.463	11.22	0.337	10.37
0.327	11.43	0.466	11.36	0.340	10.38

Table II (cont.)

J.D.	m	J.D.	m	J.D.	m
2434243+		2434253+		2434254+	
0.343	10.36	0.340	10.87	0.389	11.42
0.345	10.28	0.343	10.90	0.392	11.38
0.348	10.32	0.346	10.81	0.398	11.31
0.351	10.32	0.349	10.87	0.401	11.47
0.354	10.32	0.352	10.99	0.405	10.39
0.356	10.22	0.354	10.97	0.411	10.33
0.359	10.39	0.357	10.99	0.415	11.32
0.362	10.39	0.360	10.86	0.418	11.28
0.365	10.39	0.363	10.83	0.420	11.41
0.368	10.33	0.365	10.86	0.423	11.43
0.370	10.49	0.368	10.90	0.426	11.39
0.373	10.31	0.371	10.85	0.431	11.42
0.376	10.46	0.374	10.85	0.434	11.46
0.379	10.46	0.377	10.97	0.437	11.48
0.384	10.46			0.440	11.28
0.387	10.64	2434254+		0.443	11.28
0.390	10.61	0.290	11.53	0.445	11.48
0.393	10.47	0.293	11.49	0.448	11.38
0.395	10.54	0.295	11.64	0.451	11.22
0.398	10.48	0.298	11.56	0.454	11.36
0.401	10.49	0.302	11.58	0.456	11.39
0.406	10.70	0.306	11.55	0.459	11.44
0.409	10.74	0.309	11.59	0.462	11.42
0.412	10.77	0.312	11.70		
0.415	10.72	0.315	11.54	2434255+	
0.418	10.85	0.318	11.54	0.328	11.56
0.420	10.72	0.320	11.61	0.331	11.39
0.423	10.80	0.323	11.60	0.333	11.50
0.426	10.78	0.331	11.44	0.336	11.40
0.430	10.88	0.333	11.46	0.339	11.46
0.434	10.74	0.336	11.57	0.342	11.50
0.437	10.85	0.339	11.44	0.345	11.41
0.442	10.90	0.342	11.62	0.353	11.34
		0.345	11.42	0.356	11.52
2434253+		0.350	11.46	0.358	11.36
0.297	11.07	0.353	11.55	0.361	11.37
0.302	11.03	0.356	11.53	0.364	11.36
0.304	10.92	0.358	11.44	0.367	11.38
0.307	10.94	0.361	11.56	0.372	11.32
0.310	10.95	0.364	11.37	0.374	11.28
0.314	10.91	0.367	11.57	0.377	11.31
0.318	10.78	0.370	11.52	0.380	11.02
0.321	10.92	0.372	11.40	0.383	11.27
0.325	11.83	0.375	11.60	0.386	11.06
0.329	10.86	0.378	11.39	0.388	11.11
0.332	10.71	0.381	11.48	0.391	11.18
0.335	10.77	0.385	11.39	0.394	11.20

Table II (cont.)

J.D.	m	J.D.	m	J.D.	m
2434255+		2434277+		2434282+	
0.397	10.76	0.513	10.45	0.619	11.38
0.399	11.10	0.516	10.42	0.623	11.44
0.402	11.06	0.519	10.50	0.626	11.31
0.405	10.92	0.522	10.56	0.629	11.40
				0.633	11.45
2434277+		2434282+		2434284+	
0.380	11.40	0.493	11.55	0.266	11.58
0.383	11.42	0.495	11.46	0.272	11.54
0.386	11.54	0.498	11.44	0.275	11.46
0.390	11.54	0.501	11.33	0.277	11.40
0.394	11.56	0.504	11.47	0.280	11.50
0.397	11.49	0.507	11.44	0.283	11.37
0.400	11.58	0.509	11.42	0.286	11.59
0.402	11.61	0.512	11.31	0.288	11.60
0.405	11.47	0.515	11.46	0.291	11.53
0.411	11.44	0.518	11.36	0.294	11.53
0.413	11.50	0.520	11.44	0.297	11.63
0.416	11.51	0.523	11.42	0.300	11.60
0.419	11.50	0.526	11.35	0.302	11.52
0.422	11.40	0.529	11.29	0.305	11.59
0.425	11.12	0.532	11.37	0.311	11.43
0.430	11.07	0.534	11.47	0.314	11.52
0.433	11.18	0.537	11.50	0.316	11.47
0.436	11.23	0.540	11.39	0.319	11.52
0.450	10.76	0.543	11.52	0.322	11.43
0.452	10.60	0.545	11.28	0.325	11.46
0.455	10.79	0.548	11.60	0.327	11.38
0.458	10.59	0.551	11.43	0.330	11.53
0.461	10.51	0.554	11.44	0.333	11.60
0.463	10.42	0.559	11.32	0.336	11.47
0.466	10.33	0.562	11.32	0.339	11.42
0.469	10.31	0.565	11.39	0.341	11.52
0.472	10.28	0.568	11.32	0.344	11.54
0.475	10.36	0.570	11.41	0.347	11.44
0.477	10.26	0.573	11.24	0.352	11.44
0.480	10.39	0.576	11.31	0.355	11.45
0.483	10.36	0.579	11.40	0.358	11.37
0.486	10.21	0.582	11.32	0.361	11.39
0.488	10.24	0.584	11.51	0.364	11.50
0.491	10.33	0.587	11.35	0.366	11.38
0.494	10.20	0.590	11.32	0.369	11.32
0.497	10.21	0.593	11.30	0.372	11.44
0.500	10.30	0.595	11.32	0.375	11.44
0.502	10.37	0.601	11.22	0.377	11.28
0.505	10.40	0.607	11.40	0.380	11.54
0.508	10.40	0.612	11.48	0.383	11.37
0.511	10.36	0.615	11.44		

Table II (cont.)

J.D.	m	J.D.	m	J.D.	m
2434284+		2434284+		2434304+	
0.386	11.36	0.566	11.40	0.255	11.73
0.388	11.39	0.569	11.42	0.258	11.66
0.391	11.42	0.577	11.48	0.260	11.58
0.394	11.36	0.580	11.40	0.265	11.63
0.407	11.40	0.589	11.54	0.269	11.59
0.409	11.30	0.591	11.40	0.274	11.72
0.412	11.30	0.594	11.34	0.277	11.63
0.415	11.26	0.597	11.26	0.280	11.61
0.418	11.14	0.600	11.52	0.283	11.55
0.420	11.25	0.602	11.52	0.285	11.67
0.422	11.36	0.605	11.42	0.288	11.51
0.426	11.24	0.608	11.35	0.291	11.55
0.429	11.32	0.611	11.39	0.294	11.58
0.432	11.41	0.613	11.28	0.296	11.54
0.434	11.25	0.616	11.49	0.335	11.57
0.437	11.23	0.619	11.48	0.338	11.55
0.440	11.16	0.622	11.39	0.341	11.55
0.443	11.39			0.344	11.36
0.445	11.24	2434295+		0.347	11.47
0.448	11.40	0.255	10.73	0.349	11.45
0.451	11.28	0.258	10.58	0.352	11.53
0.454	11.30	0.261	10.48	0.356	11.46
0.480	11.32	0.264	10.42	0.360	11.56
0.483	11.48	0.267	10.54	0.391	11.28
0.486	11.31	0.269	10.51	0.394	11.35
0.489	11.37	0.272	10.50	0.397	11.37
0.491	11.25	0.275	10.50	0.399	11.16
0.494	11.35	0.278	10.48	0.402	11.15
0.497	11.48	0.282	10.57	0.405	11.14
0.500	11.44	0.286	10.55	0.408	11.18
0.502	11.47	0.289	10.59	0.410	11.35
0.505	11.36	0.292	10.57	0.413	11.21
0.508	11.41	0.294	10.64	0.416	11.07
0.511	11.50	0.303	10.68	0.419	11.20
0.513	11.43	0.305	10.70	0.422	11.08
0.516	11.60	0.308	10.90	0.424	11.12
0.519	11.37	0.311	10.82	0.427	11.20
0.522	11.44	0.314	10.78	0.433	11.00
0.527	11.58	0.318	10.86	0.436	10.94
0.530	11.32	0.322	11.04	0.438	11.01
0.533	11.35	0.325	10.87	0.444	10.98
0.536	11.53	0.328	10.92	0.449	10.95
0.539	11.41			0.452	10.97
0.550	11.48	2434304+		0.455	10.88
0.553	11.54	0.246	11.62	0.458	10.98
0.555	11.36	0.249	11.71	0.461	11.07
0.563	11.33	0.252	11.78	0.463	10.93

Table II (cont.)

J.D.	m	J.D.	m	J.D.	m
2434304+		2434304+		2434305+	
0.466	11.12	0.619	11.56	0.347	10.78
0.469	10.97	0.622	11.39	0.350	10.80
0.472	11.04	0.625	11.57	0.357	10.92
0.474	10.89	0.627	11.41	0.359	10.82
0.479	11.03	0.630	11.46	0.362	10.88
0.483	11.03	0.633	11.26	0.365	11.04
0.486	11.03	0.635	11.37	0.368	11.08
0.488	10.98			0.370	11.09
0.491	11.04	2434305+		0.373	10.92
0.494	11.12	0.233	11.14	0.377	10.97
0.497	11.18	0.236	11.16	0.380	10.99
0.499	10.98	0.238	11.11		
0.505	11.18	0.241	11.00	2434567+	
0.508	11.13	0.244	11.15	0.369	11.46
0.511	11.32	0.247	10.89	0.374	11.54
0.513	11.31	0.250	10.81	0.378	11.58
0.519	11.00	0.252	10.76	0.381	11.56
0.524	11.20	0.255	10.64	0.383	11.46
0.527	11.20	0.258	10.65	0.386	11.60
0.531	11.15	0.261	10.40	0.389	11.62
0.536	11.24	0.263	10.50	0.392	11.58
0.538	11.27	0.266	10.50	0.405	11.50
0.545	11.27	0.270	10.41	0.408	11.64
0.547	11.22	0.275	10.43	0.410	11.54
0.549	11.32	0.280	10.48	0.416	11.62
0.552	11.09	0.283	10.41	0.419	11.56
0.555	11.27	0.286	10.42	0.424	11.46
0.558	11.19	0.288	10.51	0.427	11.58
0.561	11.29	0.291	10.48	0.430	11.56
0.563	11.16	0.297	10.57	0.433	11.60
0.566	11.26	0.300	10.58	0.436	11.45
0.569	11.42	0.302	10.63	0.439	11.60
0.575	11.30	0.305	10.48	0.442	11.56
0.577	11.41	0.308	10.53	0.448	11.48
0.580	11.40	0.311	10.69	0.451	11.52
0.583	11.46	0.313	10.50	0.454	11.54
0.586	11.45	0.316	10.50	0.459	11.60
0.588	11.30	0.319	10.60	0.462	11.47
0.595	11.28	0.322	10.67	0.465	11.60
0.597	11.18	0.324	10.64	0.467	11.57
0.600	11.18	0.327	10.64	0.470	11.56
0.602	11.39	0.330	10.80	0.473	11.50
0.605	11.36	0.333	10.60	0.476	11.53
0.608	11.28	0.336	10.59	0.479	11.50
0.611	11.47	0.338	10.67	0.481	11.33
0.613	11.50	0.341	10.80	0.484	11.42
0.616	11.48	0.344	10.82	0.487	11.44

Table II (cont.)

J.D.	m	J.D.	m	J.D.	m
2434567+		2434600+		2434601+	
0.490	11.46	0.346	11.33	0.364	11.55
0.492	11.44	0.349	11.32	0.367	11.48
0.495	11.51	0.352	11.46	0.370	11.44
0.498	11.50	0.355	11.37	0.374	11.46
0.504	11.25	0.358	11.21	0.378	11.48
0.506	11.28	0.360	11.27	0.381	11.47
0.509	11.28	0.363	11.25	0.384	11.44
0.512	11.30	0.366	11.24	0.387	11.45
0.515	11.20	0.369	11.08	0.389	11.51
0.517	11.20	0.371	10.99	0.392	11.52
0.520	11.23	0.374	10.97	0.395	11.53
0.523	11.31	0.377	11.05	0.398	11.53
0.526	11.33	0.380	11.00	0.401	11.48
0.529	11.27	0.383	10.84	0.403	11.50
0.531	11.27	0.385	10.72	0.406	11.60
0.534	11.29	0.388	10.46	0.412	11.54
0.537	11.40	0.391	10.60	0.414	11.46
0.540	11.38	0.394	10.48	0.417	11.42
2434569+		0.396	10.36	0.420	11.53
0.469	11.48	0.399	10.40	0.423	11.56
0.472	11.37	0.406	10.45	0.426	11.57
0.475	11.44	0.408	10.46	0.428	11.44
0.478	11.51	0.410	10.45	0.431	11.45
0.481	11.40	0.413	10.34	0.434	11.44
0.483	11.40	0.416	10.34	0.437	11.43
0.486	11.50	0.419	10.30	0.439	11.45
0.489	11.28	0.424	10.24	0.442	11.46
0.492	11.40	0.427	10.34	0.445	11.45
2434598+		0.430	10.33	0.448	11.44
0.326	10.54	0.433	10.38	0.451	11.51
0.329	10.50	0.435	10.30	0.453	11.44
0.332	10.52	0.438	10.27	0.456	11.44
0.335	10.53	0.441	10.33	0.459	11.40
0.338	10.57	0.444	10.27	0.462	11.44
0.342	10.55	0.446	10.36	0.464	11.26
0.346	10.57	0.449	10.40	0.467	11.29
0.349	10.53	0.452	10.36	0.470	11.41
0.351	10.56	2434601+		0.473	11.48
0.354	10.70	0.342	11.52	0.476	11.55
0.357	10.60	0.345	11.62	0.481	11.48
0.360	10.80	0.348	11.59	0.484	11.56
0.362	10.80	0.351	11.58	0.487	11.51
0.365	10.73	0.353	11.54	0.489	11.60
0.371	10.74	0.356	11.57	0.492	11.60
		0.359	11.50	0.495	11.59
		0.362	11.46	0.498	11.45
				0.500	11.42

Table II (cont.)

J.D.	m	J.D.	m	J.D.	m
2434601+		2434602+		2434622+	
0.503	11.44	0.565	10.38	0.452	10.44
0.506	11.49	0.568	10.40	0.454	10.39
0.509	11.44	0.571	10.47	0.457	10.39
0.512	11.48	0.574	10.42	0.460	10.30
0.514	11.48	0.576	10.47	0.462	10.31
0.517	11.53	0.579	10.50	0.465	10.59
0.520	11.43	0.582	10.41	0.468	10.51
0.523	11.46	0.585	10.55	0.471	10.41
0.525	11.48	0.588	10.56	0.474	10.56
0.528	11.46			0.476	10.47
0.531	11.46	2434620+		0.479	10.57
0.534	11.44	0.333	10.75	0.482	10.45
0.537	11.48	0.337	10.72	0.485	10.40
0.539	11.59	0.340	10.70	0.488	10.37
0.542	11.49	0.343	10.69	0.493	10.52
0.545	11.50	0.346	10.61	0.503	10.84
0.548	11.49	0.348	10.62	0.506	10.73
		0.353	10.68	0.509	10.69
2434602+		0.357	10.63	0.511	10.84
0.483	11.08	0.359	10.60	0.514	10.80
0.486	11.15	0.362	10.62	0.517	10.79
0.489	10.90	0.365	10.61	0.519	10.91
0.492	10.90	0.368	10.67	0.522	10.87
0.494	10.92	0.371	10.60	0.525	10.97
0.497	10.94	0.382	10.64	0.528	10.88
0.500	10.66	0.384	10.65	0.531	10.87
0.503	10.64	0.389	10.63	0.533	10.88
0.506	10.60	0.392	10.75	0.536	11.00
0.508	10.34	0.395	10.82	0.539	11.04
0.511	10.42	0.398	10.94	0.542	11.09
0.514	10.28	0.400	10.95	0.544	11.08
0.517	10.26	0.403	10.78	0.547	10.97
0.519	10.26	0.406	10.81	0.550	11.08
0.522	10.15	0.409	11.13	0.553	11.12
0.525	10.15	0.412	10.97	0.556	11.05
0.528	10.14	0.414	10.84	0.558	11.18
0.531	10.17	0.417	10.98	0.561	11.07
0.533	10.30	0.420	10.98	0.564	11.13
0.540	10.28	0.423	11.14	0.567	11.25
0.543	10.27				
0.546	10.24	2434622+		2434624+	
0.549	10.26	0.435	10.33	0.469	11.10
0.551	10.32	0.438	10.33	0.471	11.02
0.554	10.33	0.440	10.49	0.474	10.98
0.557	10.40	0.443	10.47	0.477	11.10
0.560	10.34	0.446	10.35	0.480	11.02
0.562	10.43	0.449	10.42	0.482	11.12

Table II (cont.)

J.D.	m	J.D.	m	J.D.	m
2434624+		2434624+		2434629+	
0.485	10.99	0.621	10.81	0.433	11.02
0.488	11.08	0.624	10.80	0.435	11.24
0.491	11.04			0.438	11.09
0.493	11.00	2434629+		0.441	11.20
0.496	11.02	0.308	11.66	0.467	11.11
0.499	11.04	0.310	11.45	0.471	11.14
0.502	11.05	0.313	11.61	0.474	11.08
0.505	10.99	0.316	11.56	0.477	11.00
0.507	11.02	0.319	11.45	0.480	11.08
0.510	11.04	0.321	11.49	0.483	11.07
0.513	10.97	0.324	11.56	0.485	11.12
0.516	10.85	0.327	11.55	0.488	11.16
0.518	10.67	0.330	11.31	0.491	11.12
0.521	10.65	0.332	11.50	0.494	11.08
0.524	10.62	0.335	11.46	0.496	11.02
0.527	10.63	0.341	11.58	0.499	11.17
0.532	10.53	0.344	11.36	0.502	11.10
0.535	10.60	0.346	11.48	0.505	11.14
0.538	10.54	0.349	11.32	0.510	11.00
0.541	10.46	0.352	11.50	0.513	11.09
0.544	10.43	0.355	11.36	0.516	11.23
0.546	10.63	0.357	11.48	0.519	11.13
0.549	10.42	0.360	11.50	0.524	11.20
0.552	10.53	0.363	11.39	0.526	11.20
0.555	10.40	0.366	11.50	0.591	11.01
0.557	10.31	0.369	11.46	0.594	11.08
0.560	10.24	0.371	11.40	0.596	11.19
0.563	10.36	0.374	11.54	0.599	11.20
0.566	10.40	0.380	11.28	0.602	11.16
0.568	10.37	0.383	11.28	0.605	11.25
0.571	10.33	0.385	11.26	0.607	11.20
0.574	10.37	0.388	11.24	0.610	11.23
0.577	10.30	0.391	11.28	0.613	11.25
0.580	10.31	0.394	11.10	0.616	11.29
0.582	10.40	0.396	11.30	0.619	11.33
0.585	10.44	0.399	11.27	0.621	11.30
0.588	10.22	0.402	11.36	0.624	11.33
0.591	10.40	0.405	11.26	0.627	11.23
0.596	10.67	0.408	11.23	0.630	11.24
0.599	10.66	0.410	11.20		
0.602	10.68	0.413	11.20	2434630+	
0.605	10.88	0.416	11.25	0.276	11.20
0.607	10.94	0.419	11.32	0.279	11.14
0.610	10.71	0.421	11.25	0.281	11.08
0.613	10.83	0.424	11.21	0.284	11.06
0.616	10.61	0.427	11.20	0.287	11.05
0.619	10.84	0.430	11.23	0.290	11.00



Table II (cont.)

J.D.	m	J.D.	m	J.D.	m
2434630+		2434649+		2434652+	
0.292	10.92	0.306	11.25	0.291	11.14
0.295	11.00	0.309	11.24	0.305	11.06
0.298	10.84	0.312	10.99	0.308	10.90
0.301	10.83	0.315	11.10	0.310	11.00
0.304	10.71	0.324	11.08	0.313	10.82
0.306	10.74	0.327	10.92	0.316	10.98
0.309	10.80	0.330	10.97	0.319	10.80
0.312	10.64	0.333	10.97	0.321	10.72
0.315	10.64	0.335	10.96	0.324	10.78
0.317	10.63	0.338	10.97	0.327	10.66
0.320	10.58	0.341	10.81	0.330	10.73
0.323	10.73	0.344	10.78	0.344	11.03
0.325	10.65	0.347	10.65	0.346	11.01
0.328	10.60	0.349	10.80	0.349	10.88
0.331	10.60	0.352	10.88	0.352	11.00
0.334	10.62	0.355	10.80	0.355	11.00
0.337	10.63	0.365	10.40	0.357	11.18
0.341	10.64	0.367	10.40	0.360	11.18
0.344	10.64	0.370	10.46	0.363	11.20
0.347	10.66	0.373	10.46	0.366	11.07
0.349	10.62	0.376	10.57	0.369	11.02
0.352	10.65	0.379	10.58	0.371	11.08
0.355	10.70	0.394	10.62	0.374	10.98
0.358	10.65	0.397	10.60	0.377	11.09
0.360	10.73	0.399	10.69	0.380	11.04
0.380	10.75	0.402	10.61	0.383	11.20
0.383	10.80	0.405	10.70	0.385	11.10
0.385	10.71	0.408	10.66	0.388	11.20
0.388	10.63	0.412	10.71	0.391	11.32
0.391	10.78	0.416	10.67	0.394	11.20
0.394	10.81	0.419	10.69	0.396	11.20
0.397	10.70	0.422	10.80	0.399	11.26
0.399	10.75			0.402	11.13
0.402	10.72	2434652+		0.405	11.24
0.405	10.81	0.255	11.36	0.407	11.30
0.408	10.80	0.258	11.40	0.410	11.20
0.410	10.83	0.260	11.23		
0.413	10.92	0.263	11.18	2434654+	
0.416	10.81	0.266	11.19	0.397	11.04
		0.269	11.10	0.399	11.30
2434649+		0.271	11.16	0.402	11.08
0.290	11.60	0.274	11.26	0.405	11.08
0.292	11.42	0.277	11.14	0.408	11.12
0.295	11.40	0.280	11.08	0.410	11.00
0.298	11.42	0.283	11.12	0.413	11.20
0.301	11.40	0.285	11.20	0.416	11.08
0.304	11.20	0.288	11.14	0.419	10.97

Table II (cont.)

J.D.	m	J.D.	m	J.D.	m
2434654+		2434656+		2434661+	
0.422	11.00	0.544	10.79	0.353	11.42
0.424	11.05	0.547	10.61	0.357	11.43
0.427	10.81	0.549	10.70	0.359	11.56
0.430	10.88	0.552	10.50	0.362	11.48
0.433	10.86	0.555	10.63	0.365	11.54
0.435	10.90	0.561	10.65	0.368	11.50
0.438	10.80	0.563	10.64	0.370	11.50
0.441	10.81	0.569	10.66	0.373	11.53
0.444	10.83	0.572	10.53	0.376	11.54
0.447	10.78	0.574	10.64	0.379	11.35
0.449	10.90	0.577	10.64	0.382	11.44
0.452	10.80	0.580	10.61	0.384	11.23
0.455	10.87	0.583	10.52	0.387	11.48
0.458	10.73	0.588	10.71	0.390	11.46
0.463	10.60	0.591	10.64	0.422	11.00
0.466	10.60	0.594	10.63	0.427	10.92
0.469	10.58	0.597	10.62	0.430	10.97
0.472	10.50	0.599	10.64	0.433	11.08
0.474	10.62	0.602	10.53	0.436	10.97
0.477	10.63	0.605	10.66	0.438	11.03
0.480	10.64	0.608	10.64	0.441	10.88
0.483	10.58	0.611	10.67	0.444	10.80
0.485	10.70	0.613	10.60	0.447	10.80
0.488	10.59	0.616	10.64	0.450	10.83
0.490	10.61	0.619	10.77	0.452	10.88
0.494	10.59	0.622	10.64	0.455	10.78
0.497	10.68	0.624	10.67	0.458	10.75
0.500	10.69	0.627	10.64	0.461	10.87
0.502	10.68	0.630	10.80	0.463	10.68
0.505	10.70	0.633	10.69	0.466	10.78
0.508	10.74	0.636	10.76	0.469	10.76
0.510	10.69	0.638	10.80	0.472	10.56
0.513	10.73	0.641	10.78	0.475	10.60
0.516	10.74	0.644	10.77	0.477	10.67
0.519	10.72	0.647	10.85	0.480	10.62
0.522	10.78	0.649	10.76	0.483	10.67
		0.652	10.86	0.486	10.42
2434656+		2434661+		2434662+	
0.519	11.10	0.332	11.60	0.302	11.02
0.522	11.18	0.334	11.61	0.305	11.14
0.524	10.98	0.337	11.78	0.308	10.98
0.527	11.00	0.340	11.65	0.311	11.00
0.530	11.03	0.343	11.56	0.313	10.98
0.533	11.10	0.345	11.55	0.316	10.97
0.536	10.90	0.348	11.58	0.319	10.97
0.538	10.80	0.351	11.42	0.322	10.90
0.541	10.97				

Table II (cont.)

J.D.	m	J.D.	m	J.D.	m
2434662+		2434664+		2434920+	
0.325	10.77	0.388	11.49	0.434	11.15
0.327	10.77	0.391	11.40	0.437	11.08
0.330	10.87	0.394	11.44	0.441	11.09
0.333	10.86	0.397	11.22	0.445	11.16
0.336	10.74	0.400	11.27	0.448	11.04
0.338	10.80	0.402	11.12	0.451	11.20
0.341	10.73	0.405	11.20	0.454	11.10
0.344	10.77	0.408	11.20	0.457	10.98
0.348	10.70	0.411	11.32		
0.353	10.71	0.413	11.13	2434924+	
0.358	10.70	0.416	11.02	0.409	11.50
0.361	10.67	0.419	10.97	0.412	11.60
0.369	10.75	0.422	10.94	0.415	11.52
0.372	10.66	0.425	10.86	0.420	11.57
0.374	10.65	0.427	10.74	0.478	11.49
0.377	10.64	0.430	10.69	0.484	11.50
0.380	10.65	0.433	10.80	0.487	11.50
0.383	10.68	0.436	10.64	0.492	11.49
0.386	10.71	0.438	10.61	0.500	11.62
0.391	10.61	0.441	10.54	0.507	11.53
0.394	10.86	0.444	10.68	0.513	11.51
0.397	10.69	0.447	10.62	0.517	11.46
0.400	10.76	0.450	10.61	0.520	11.46
0.402	10.86	0.458	10.49	0.525	11.50
0.405	10.90	0.461	10.47		
0.408	10.75	0.463	10.51	2434987+	
0.411	10.80	0.466	10.63	0.342	11.12
0.413	10.84	0.469	10.58	0.345	11.10
0.416	10.88	0.472	10.48	0.348	11.20
0.422	10.97	0.475	10.55	0.351	11.10
0.425	10.77	0.477	10.64	0.353	11.23
0.427	10.84	0.480	10.52	0.356	11.17
0.430	10.93	0.483	10.57	0.358	11.20
0.433	10.97	0.486	10.70	0.361	11.16
0.436	10.98	0.488	10.72	0.364	11.20
0.439	10.90	0.491	10.57	0.367	11.15
0.441	10.81			0.370	10.90
0.444	10.91	2434920+		0.373	11.20
0.447	10.91	0.398	10.97	0.376	11.20
0.450	11.04	0.402	10.96	0.378	10.98
0.452	11.05	0.407	10.96	0.382	10.99
0.455	10.98	0.412	11.02	0.385	10.91
0.458	11.04	0.416	11.01	0.388	10.90
0.461	11.03	0.420	10.88	0.391	11.03
0.463	11.02	0.423	10.97	0.394	10.83
0.466	11.03	0.426	11.04	0.396	10.99
		0.430	11.10	0.399	10.88

Table II (cont.)

J.D.	m	J.D.	m	J.D.	m
2434987+		2434987+		2434989+	
0.405	11.00	0.577	11.13	0.554	10.84
0.410	11.02	0.580	11.01	0.557	10.70
0.413	10.90	0.582	11.04	0.565	10.78
0.416	10.97	0.585	11.15	0.574	10.80
0.419	10.92	0.588	11.04	0.577	10.80
0.421	10.89	0.591	11.23		
0.424	10.78	0.594	11.18	2434990+	
0.427	10.75	0.596	11.20	0.360	11.57
0.430	10.76	0.599	11.30	0.366	11.48
0.432	10.83	0.602	11.24	0.369	11.48
0.435	10.92	0.605	11.23	0.371	11.66
0.438	10.72	0.607	11.12	0.374	11.62
0.441	10.76	0.610	11.32	0.377	11.50
0.444	10.70	2434989+		0.380	11.67
0.446	10.84	0.405	11.63	0.382	11.60
0.449	10.62	0.408	11.70	0.385	11.70
0.452	10.73	0.411	11.55	0.388	11.46
0.455	10.63	0.414	11.56	0.391	11.57
0.457	10.70	0.416	11.56	0.394	11.62
0.463	10.69	0.419	11.44	0.396	11.66
0.469	10.68	0.425	11.46	0.399	11.50
0.488	10.93	0.430	11.55	0.402	11.70
0.491	10.92	0.433	11.56	0.405	11.58
0.494	11.02	0.436	11.49	0.407	11.61
0.499	10.86	0.439	11.59	0.410	11.60
0.502	10.97	0.441	11.56	0.413	11.61
0.505	11.06	0.447	11.50	0.416	11.70
0.507	10.89	0.450	11.48	0.419	11.57
0.510	10.98	0.458	10.98	0.421	11.59
0.513	10.98	0.461	11.12	0.474	11.68
0.516	11.07	0.464	10.93	0.483	11.65
0.519	11.00	0.466	10.76	0.488	11.60
0.521	11.13	0.469	10.95	0.491	11.70
0.524	11.09	0.472	10.84	0.494	11.70
0.527	11.01	0.475	10.90	0.496	11.74
0.530	11.02	0.478	10.76	0.499	11.73
0.532	10.98	0.480	10.76	0.502	11.68
0.535	11.07	0.504	10.50	0.505	11.64
0.538	11.20	0.509	10.70	0.507	11.48
0.541	11.18	0.512	10.58	0.510	11.52
0.543	11.06	0.517	10.49	0.516	11.45
0.546	11.10	0.521	10.50	0.519	11.67
0.552	11.12	0.526	10.50	0.521	11.70
0.555	10.99	0.529	10.54	2435009+	
0.557	11.15	0.532	10.50	0.352	11.37
0.560	11.15	0.536	10.55	0.355	11.45
0.563	11.16	0.540	10.64	0.357	11.40
0.566	11.10	0.543	10.63	0.360	11.42
0.569	11.24	0.546	10.76	0.363	11.46
0.571	11.09	0.548	10.73	0.366	11.26
0.574	11.12	0.551	10.70	0.372	11.40

Table III  
Photoelectric observations of AC Andromedae

J.D.	m-m <sub>0</sub>	J.D.	m-m <sub>0</sub>	J.D.	m-m <sub>0</sub>
2435016+		2435019+		2435019+	
0.3985	0.379	0.3492	1.016	0.4311	0.725
0.3999	0.403	0.3502	1.067	0.4321	0.720
0.4013	0.410	0.3576	1.016	0.4332	0.744
0.4027	0.379	0.3586	1.025	0.4343	0.710
0.4041	0.392	0.3596	1.002	0.4353	0.729
0.4055	0.381	0.3606	1.013	0.4363	0.716
0.4068	0.392	0.3634	1.028	0.4373	0.708
0.4082	0.410	0.3655	0.950	0.4384	0.719
0.4096	0.424	0.3683	0.990	0.4394	0.711
0.4110	0.478	0.3693	0.959	0.4406	0.717
		0.3708	0.963	0.4443	0.707
2435019+		0.3718	0.945	0.4453	0.723
0.2961	1.207	0.3728	0.939	0.4464	0.693
0.2981	1.181	0.3738	0.927	0.4475	0.716
0.3023	1.248	0.3748	0.943	0.4485	0.709
0.3041	1.272	0.3760	0.879	0.4495	0.721
0.3051	1.251	0.3843	0.853	0.4516	0.699
0.3061	1.296	0.3850	0.860	0.4526	0.724
0.3072	1.283	0.3863	0.843	0.4537	0.711
0.3086	1.288	0.3874	0.845	0.4547	0.721
0.3166	1.079	0.3884	0.841	0.4557	0.730
0.3176	1.111	0.3894	0.840	0.4568	0.729
0.3186	1.102	0.3905	0.847	0.4579	0.721
0.3197	1.096	0.3915	0.847	0.4589	0.729
0.3207	1.098	0.3926	0.836	0.4600	0.719
0.3218	1.073	0.3936	0.835	0.4610	0.730
0.3228	1.051	0.3947	0.790	0.4620	0.693
0.3238	1.115	0.3957	0.799		
0.3249	1.100	0.3968	0.774	2435043+	
0.3259	1.122	0.3977	0.787	0.4554	0.864
0.3270	1.101	0.4033	0.745	0.4563	0.823
0.3280	1.121	0.4043	0.766	0.4573	0.810
0.3290	1.102	0.4054	0.775	0.4583	0.786
0.3301	1.086	0.4065	0.738	0.4593	0.821
0.3312	1.082	0.4075	0.739	0.4604	0.879
0.3322	1.095	0.4086	0.721	0.4614	0.856
0.3336	1.083	0.4096	0.708	0.4624	0.792
0.3374	1.056	0.4106	0.737	0.4634	0.779
0.3384	1.063	0.4117	0.714	0.4688	0.676
0.3395	1.049	0.4127	0.738	0.4705	0.803
0.3405	1.051	0.4137	0.748	0.4715	0.764
0.3415	1.046	0.4148	0.724	0.4725	0.744
0.3426	1.055	0.4158	0.706	0.4736	0.708
0.3436	1.052	0.4169	0.695	0.4746	0.651
0.3447	1.080	0.4179	0.745	0.4757	0.816
0.3468	1.052	0.4189	0.686	0.4767	0.785
0.3481	1.029	0.4301	0.703	0.4826	0.767

Table III (cont.)

J.D.	m-m <sub>0</sub>	J.D.	m-m <sub>0</sub>	J.D.	m-m <sub>0</sub>
2435043+		2435046+		2435061+	
0.4836	0.790	0.3153	0.197	0.4605	0.386
0.4847	0.740	0.3163	0.224	0.4654	0.779
0.4857	0.675	0.3174	0.255	0.4726	0.836
0.4868	0.711	0.3184	0.260	0.4737	0.877
0.4878	0.750	0.3194	0.221	0.4749	0.808
0.4888	0.706	0.3205	0.224	0.4763	0.740
0.4900	0.665	0.3215	0.237		
0.5032	0.735	0.3225	0.237	2435393+	
0.5042	0.706	0.3236	0.260	0.2595	1.029
0.5052	0.664	0.3246	0.273	0.2606	1.009
0.5063	0.685	0.3257	0.292	0.2616	1.040
0.5073	0.604	0.3267	0.281	0.2627	1.014
0.5083	0.638	0.3333	0.205	0.2637	1.021
0.5093	0.617	0.3343	0.224	0.2679	1.045
0.5105	0.651	0.3354	0.335	0.2689	1.093
		0.3368	0.347	0.2700	1.056
		0.3382	0.436	0.2710	1.055
2435046+				0.2720	1.030
0.2503	0.902	2435061+		0.2731	1.090
0.2514	0.799	0.3886	0.884	0.2741	1.083
0.2524	0.830	0.3964	1.010	0.2818	1.020
0.2535	0.744	0.3914	1.071	0.2828	1.044
0.2545	0.785	0.3926	0.924	0.2839	0.981
0.2556	0.736	0.3940	1.009	0.2849	1.017
0.2566	0.767	0.3987	0.957	0.2859	0.992
0.2576	0.739	0.3997	0.984	0.2870	0.953
0.2622	0.736	0.4008	1.011	0.2880	1.013
0.2632	0.775	0.4032	0.951	0.2936	0.961
0.2642	0.753	0.4042	0.924	0.2946	1.002
0.2653	0.728	0.4053	0.987	0.2957	0.943
0.2663	0.715	0.4081	0.945	0.2967	0.954
0.2673	0.681	0.4091	0.828	0.2977	0.949
0.2683	0.712	0.4101	0.917	0.2988	0.962
0.2750	0.677	0.4112	0.993	0.2998	0.907
0.2760	0.570	0.4122	0.965	0.3009	0.951
0.2771	0.582	0.4240	0.860	0.3019	0.891
0.2781	0.598	0.4258	0.899	0.3123	0.802
0.2792	0.525	0.4294	0.910	0.3134	0.866
0.2802	0.521	0.4308	0.840	0.3144	0.844
0.2812	0.485	0.4351	0.859	0.3155	0.820
0.2826	0.429	0.4374	0.853	0.3165	0.822
0.2840	0.345	0.4402	0.928	0.3175	0.661
0.2854	0.342	0.4431	0.861	0.3186	0.757
0.3007	0.103	0.4511	0.910	0.3196	0.736
0.3017	0.137	0.4532	0.781	0.3306	0.451
0.3056	0.173	0.4560	0.770	0.3320	0.561
0.3076	0.115	0.4581	0.916	0.3332	0.548
0.3090	0.135				

Table III (cont.)

J.D.	m-m <sub>o</sub>	J.D.	m-m <sub>o</sub>	J.D.	m-m <sub>o</sub>
2435393+		2435393+		2435393+	
0.3342	0.502	0.4276	0.384	0.5205	0.822
0.3352	0.536	0.4286	0.310	0.5297	0.791
0.3365	0.438	0.4297	0.324	0.5307	0.858
0.3450	0.201	0.4307	0.391	0.5318	0.893
0.3460	0.196	0.4318	0.389	0.5328	0.854
0.3477	0.177	0.4328	0.363	0.5339	0.831
0.3481	0.155	0.4339	0.420	0.5349	0.811
0.3491	0.159	0.4436	0.448	0.5359	0.839
0.3502	0.102	0.4457	0.504	0.5370	0.905
0.3512	0.108	0.4467	0.440	0.5380	0.865
0.3523	0.062	0.4477	0.532	0.5436	0.880
0.3533	0.104	0.4503	0.441	0.5446	0.867
0.3542	0.090	0.4519	0.516	0.5459	0.875
0.3575	0.045	0.4530	0.584	0.5470	0.841
0.3585	0.073	0.4542	0.505	0.5482	0.887
0.3595	0.075	0.4602	0.549	0.5495	0.836
0.3606	0.072	0.4613	0.565	0.5508	0.813
0.3616	0.039	0.4623	0.577	0.5519	0.868
0.3627	0.039	0.4634	0.602	0.5533	0.866
0.3637	0.037	0.4644	0.578	0.5543	0.858
0.3648	0.062	0.4655	0.598	0.5554	0.889
0.3658	0.008	0.4665	0.594	0.5700	0.892
0.3668	0.002	0.4679	0.600	0.5710	0.960
0.3679	0.061	0.4688	0.598	0.5720	0.934
0.3720	0.034	0.4727	0.643	0.5731	0.943
0.3731	0.040	0.4738	0.625	0.5741	0.953
0.3741	0.040	0.4748	0.646	0.5752	0.975
0.3752	0.034	0.4759	0.692	0.5762	0.877
0.3762	0.032	0.4769	0.619	0.5776	0.903
0.3773	0.034	0.4780	0.636	0.5792	0.889
0.3783	0.049	0.4790	0.599	0.5804	0.916
0.3793	0.063	0.4957	0.753	0.5814	0.901
0.3804	0.044	0.4970	0.906	0.5825	1.004
0.3814	0.049	0.4988	0.853	0.5833	0.985
0.3823	0.051	0.5009	0.720	0.5901	1.017
0.4068	0.218	0.5030	0.780	0.5911	0.928
0.4084	0.172	0.5043	0.766	0.5924	0.988
0.4095	0.197	0.5054	0.806	0.5936	0.969
0.4107	0.232	0.5064	0.796	0.5946	1.026
0.4120	0.247	0.5075	0.794	0.5957	0.923
0.4130	0.225	0.5128	0.794		
0.4182	0.249	0.5141	0.787	2435395+	
0.4193	0.294	0.5151	0.814	0.2723	1.352
0.4203	0.348	0.5161	0.826	0.2739	1.406
0.4214	0.355	0.5172	0.799	0.2756	1.351
0.4224	0.355	0.5182	0.821	0.2770	1.356
0.4234	0.333	0.5193	0.819	0.2826	1.338

Table III (cont.)

J.D.	m-m <sub>0</sub>	J.D.	m-m <sub>0</sub>	J.D.	m-m <sub>0</sub>
2435395+		2435396+		2435696+	
0.2843	1.390	0.5162	1.158	0.4278	0.260
0.2864	1.349	0.5197	1.302	0.4299	0.386
0.2881	1.353	0.5231	1.095	0.4320	0.263
0.2900	1.369	0.5266	1.036	0.4341	0.296
0.2986	1.282	0.5301	1.086	0.4514	0.420
0.3666	1.147	0.5391	1.071	0.4535	0.394
		0.5409	0.974	0.4556	0.540
		0.5429	1.053	0.4580	0.405
2435396+				0.4639	0.309
0.2635	1.013	2435696+		0.4664	0.374
0.2658	0.961	0.3362	0.813	0.4691	0.309
0.2678	0.999	0.3372	0.941		
0.2699	0.992	0.3382	0.871	2435720+	
0.2806	0.866	0.3424	0.850	0.4627	0.918
0.2831	0.939	0.3433	0.753	0.4645	0.907
0.2860	0.922	0.3441	0.776	0.4665	0.865
0.2933	0.943	0.3452	0.848	0.4687	0.847
0.2962	1.025	0.3462	0.760	0.4711	0.814
0.2976	1.006	0.3473	0.765	0.4763	0.845
0.2995	0.988	0.3483	0.728	0.4788	0.786
0.3014	0.930	0.3497	0.675	0.4815	0.799
0.3362	0.965	0.3509	0.640		
0.3394	0.987	0.3594	0.543	2435728+	
0.3446	0.969	0.3605	0.512	0.3584	0.894
0.3559	1.006	0.3615	0.507	0.3604	0.903
0.3731	1.039	0.3626	0.567	0.3629	0.854
0.3898	1.025	0.3636	0.557	0.3653	0.812
0.3941	1.043	0.3646	0.526	0.3674	0.848
0.3981	0.987	0.3657	0.501	0.3729	0.859
0.4075	1.028	0.3669	0.495	0.3750	0.844
0.4096	1.080	0.3683	0.493	0.3771	0.760
0.4120	1.124	0.3723	0.461	0.3792	0.723
0.4162	1.055	0.3738	0.369	0.3812	0.688
0.4193	0.998	0.3757	0.366	0.3896	0.540
0.4304	1.068	0.3778	0.327	0.3924	0.468
0.4339	1.129	0.3813	0.408	0.3955	0.526
0.4377	1.188	0.3841	0.188	0.3983	0.423
0.4405	1.180	0.3862	0.198	0.4035	0.381
0.4498	1.060	0.3886	0.203	0.4059	0.432
0.4521	1.064	0.4056	0.135	0.4087	0.438
0.4579	1.142	0.4077	0.103	0.4167	0.176
0.4610	1.193	0.4098	0.166	0.4191	0.206
0.4711	1.116	0.4119	0.115	0.4389	0.083
0.4731	1.118	0.4139	0.156	0.4410	0.078
0.4760	1.019	0.4164	0.160	0.4431	0.113
0.4843	1.080	0.4237	0.307	0.4507	0.065
0.4881	1.111	0.4257	0.289	0.4524	0.110
0.5131	1.187				



Table III (cont.)

J.D.	m-m <sub>0</sub>	J.D.	m-m <sub>0</sub>	J.D.	m-m <sub>0</sub>
2435728+		2435747+		2435748+	
0.4538	0.102	0.3147	1.062	0.3521	0.141
		0.3169	1.054	0.3542	0.170
2435745+		0.3185	1.041	0.3563	0.175
0.2777	1.025	0.3251	0.901	0.3584	0.192
0.2798	0.931	0.3272	0.902	0.3640	0.214
0.2819	0.980	0.3293	1.000	0.3660	0.215
0.2840	0.913	0.3313	1.005	0.3681	0.231
0.2860	1.009	0.3327	1.055	0.3702	0.242
0.2881	0.987	0.3383	0.968	0.3723	0.230
0.2937	0.942	0.3404	1.038		
0.2958	0.927	0.3425	1.016	2435749+	
0.2979	0.933	0.3444	1.051	0.2817	0.993
0.2999	0.909	0.3466	1.002	0.2838	0.979
0.3020	0.969	0.3529	0.972	0.2859	0.977
0.3090	0.934	0.3550	0.964	0.2876	0.979
0.3110	0.930	0.3570	1.082	0.2928	1.014
0.3131	0.618	0.3591	0.865	0.2949	1.024
0.3159	0.779	0.3609	1.057	0.2970	1.071
0.3347	0.594	0.3806	1.005	0.2990	1.020
0.3367	0.598	0.3825	1.015	0.3018	1.057
0.3388	0.584	0.3848	0.964	0.3039	1.067
0.3409	0.604	0.3860	0.950	0.3085	1.051
0.3433	0.577	0.3886	0.976	0.3115	1.058
0.3517	0.671	0.4098	0.779	0.3136	1.075
0.3659	0.565	0.4119	0.686	0.3156	1.102
0.3756	0.565	0.4140	0.662	0.3178	1.166
0.4135	0.625	0.4161	0.761	0.3199	1.158
0.4124	0.640	0.4192	0.847	0.3254	1.094
0.4144	0.685	0.4251	0.720	0.3275	1.027
0.4169	0.691	0.4272	0.825	0.3296	1.065
0.4197	0.656	0.4296	0.734	0.3317	1.081
0.4374	0.676			0.3338	1.075
0.4406	0.820	2435748+		0.3477	1.054
0.4541	0.753	0.3014	0.256	0.3497	1.105
0.4561	0.765	0.3035	0.233	0.4426	1.007
0.4583	0.796	0.3056	0.220	0.4449	1.019
0.4600	0.764	0.3077	0.183	0.4470	1.022
0.4621	0.805	0.3098	0.150	0.4490	1.006
2435747+		0.3160	0.136	0.4511	0.987
0.2820	1.024	0.3181	0.128	0.4568	1.020
0.2841	1.066	0.3202	0.121	0.4588	1.010
0.2862	1.088	0.3223	0.121	0.4605	1.000
0.2883	0.995	0.3244	0.123	0.4629	1.017
0.2907	0.972	0.3265	0.122	0.4650	0.988
0.2966	0.982	0.3320	0.107	0.4671	0.982
0.2966	0.982	0.3341	0.101	0.4725	0.966
0.2987	1.088	0.3362	0.093	0.4747	0.963
0.3008	1.080	0.3383	0.107	0.4789	0.827
0.3029	1.133	0.3403	0.111	0.4810	0.814
0.3050	1.034	0.3424	0.112	0.4831	0.887
0.3105	0.979	0.3480	0.113		
0.3125	1.052	0.3501	0.148		

Table IV  
Photographic normal points

J.D.	m	J.D.	m	J.D.	m
2428009+		2430259+		2430262+	
0.553	10.58	0.320	11.26	0.600	11.28
		0.340	11.30		
2428047+		0.360	11.37	2430266+	
0.390	11.10	0.380	11.44	0.450	11.66
0.410	11.13	0.400	11.52	0.470	11.60
0.430	11.16	0.420	11.58	0.490	11.56
0.450	11.20	0.440	11.64	0.510	11.55
0.470	11.22	0.460	11.70	0.530	11.55
0.490	11.25	0.480	11.76	0.550	11.55
0.510	11.28	0.500	11.82	0.570	11.55
0.530	11.31	0.520	11.83	0.590	11.57
0.550	11.35	0.540	11.81	0.610	11.60
0.570	11.40	0.560	11.79	0.630	11.63
0.590	11.42	0.580	11.76		
0.610	11.44	0.600	11.70	2430267+	
		0.620	11.63	0.460	11.62
2428048+		0.640	11.53	0.490	11.61
0.500	10.98				
0.520	10.88	2430260+		2430285+	
0.540	10.84	0.440	11.30	0.410	10.59
0.560	10.87	0.470	11.29	0.415	10.48
		0.500	11.31	0.420	10.37
2428489+		0.530	11.31	0.425	10.32
0.540	10.43	0.560	11.31	0.430	10.33
		0.590	11.32	0.435	10.35
2428790+		0.620	11.33	0.440	10.37
0.470	10.79			0.445	10.39
0.490	10.88			0.450	10.41
0.510	10.97				
0.530	11.04	2430261+		2431684+	
0.550	11.12	0.310	10.80	0.370	10.71
0.570	11.20	0.330	10.83	0.390	10.88
0.590	11.28	0.350	10.88	0.410	11.04
		0.370	10.93		
2430258+		0.410	11.11		
0.280	11.02	0.430	11.22	2431695+	
0.310	11.09	0.450	11.30	0.310	11.55
0.450	11.43	0.470	11.36	0.340	11.55
0.480	11.44	0.490	11.41	0.370	11.55
0.500	11.46	0.510	11.45	0.400	11.55
0.520	11.47			0.430	11.55
0.540	11.48	2430262+		0.460	11.54
0.560	11.48	0.360	11.48	0.490	11.54
0.580	11.47	0.380	11.47		
0.600	11.46	0.400	11.46	2431703+	
		0.420	11.46	0.470	11.26
2430259+		0.520	11.36	0.500	11.27
0.260	11.07	0.539	11.33	0.530	11.27
0.280	11.14	0.560	11.30	0.560	11.28
0.300	11.20	0.580	11.29	0.580	11.30

Table IV (cont.)

J.D.	m	J.D.	m	J.D.	m
2431704+		2432092+		2432444+	
0.300	11.28	0.415	11.54	0.515	11.52
0.305	11.03	0.435	11.47	0.535	11.53
0.310	10.88	0.475	11.32	0.555	11.55
0.315	10.76	0.495	11.23	0.575	11.56
0.320	10.65	0.535	11.03	0.590	11.57
0.325	10.57				
0.330	10.54	2432094+		2432466+	
0.335	10.58	0.460	11.61	0.275	11.49
0.340	10.60	0.480	11.62	0.290	11.50
0.345	10.60	0.500	11.62	0.310	11.52
0.350	10.60	0.515	11.61	0.360	11.58
0.355	10.60			0.370	11.60
0.360	10.60	2432095+		0.405	11.67
0.365	10.62	0.400	11.34		
0.370	10.64	0.420	11.34	2432467+	
0.375	10.67	0.460	11.38	0.250	11.63
0.380	10.70			0.260	11.62
0.385	10.72	2432097+		0.290	11.53
0.390	10.76	0.380	11.56	0.325	11.22
0.395	10.80	0.390	11.58	0.330	11.14
0.400	10.82	0.405	11.62	0.335	11.00
0.420	10.92	0.420	11.64	0.345	10.69
0.430	10.98	0.470	11.68	0.350	10.53
0.440	11.04	0.490	11.67	0.355	10.38
0.470	11.19	0.530	11.61	0.360	10.26
0.480	11.24			0.365	10.20
0.490	11.29	2432421+		0.370	10.17
0.500	11.34	0.395	11.45	0.420	10.34
0.510	11.39	0.405	11.49	0.425	10.40
0.520	11.44	0.430	11.58	0.430	10.46
0.530	11.48	0.445	11.64	0.435	10.53
0.540	11.52	0.460	11.69	0.440	10.59
0.550	11.56	0.505	11.78	0.445	10.64
0.560	11.61			0.450	10.70
0.570	11.66	2432441+		0.455	10.76
2431707+		0.395	11.50	2432469+	
0.335	11.56	0.415	11.56	0.435	11.33
0.355	11.50	0.435	11.61	0.440	11.21
0.375	11.47	0.490	11.68	0.445	11.08
0.395	11.45	0.540	11.64	0.450	10.96
0.415	11.45	0.585	11.50	0.455	10.81
0.435	11.48	0.605	11.43	0.460	10.66
0.455	11.52			0.465	10.53
0.475	11.55	2432444+		0.470	10.39
0.495	11.57	0.335	11.41	0.475	10.24
0.515	11.58	0.350	11.42	0.480	10.21
0.535	11.58	0.365	11.43		

Table IV (cont.)

J.D.	m	J.D.	m	J.D.	m
2432469+					
0.485	10.24				
0.490	10.24				
0.495	10.21				
0.500	10.21				
0.505	10.26				
0.510	10.30				
0.515	10.35				
0.520	10.38				
0.525	10.42				
0.530	10.47				
0.535	10.51				
0.540	10.56				
0.545	10.61				
2432472+					
0.290	11.28				
0.310	11.28				
0.330	11.28				
2432474+					
0.420	11.45				
0.440	11.38				
0.460	11.31				
0.480	11.27				
0.500	11.24				
0.520	11.23				
0.540	11.24				
2432479+					
0.390	11.42				
0.400	11.39				
0.410	11.32				
0.420	11.26				
0.430	11.19				
0.435	11.14				
0.440	11.08				
0.445	11.02				
0.450	10.95				
0.455	10.87				
0.460	10.78				
0.465	10.70				
0.470	10.63				
0.475	10.58				
0.480	10.53				
0.485	10.49				
0.490	10.48				
2432482+					
0.265	11.13				
0.285	11.28				
2432761+					
0.400	11.46				
0.420	11.45				
2432764+					
0.420	11.65				
0.440	11.60				
0.460	11.57				
0.480	11.53				
2432824+					
0.440	10.23				
0.445	10.25				
0.450	10.26				
0.455	10.29				
0.460	10.31				
0.465	10.35				
0.470	10.39				
0.475	10.43				
2432826+					
0.410	11.40				
0.460	11.58				
2432829+					
0.250	11.27				
0.260	11.21				
0.270	11.19				
0.280	11.19				
0.290	11.22				
0.300	11.25				
0.310	11.26				
0.320	11.25				
0.330	11.20				
0.340	11.16				
0.350	11.16				
0.360	11.23				
0.370	11.30				
2432823+					
0.320	11.63				
0.340	11.62				
0.360	11.61				
2432824+					
0.365	11.46				
0.370	11.39				
0.375	11.31				
0.380	11.22				
0.385	11.12				
0.390	11.01				
0.395	10.89				
0.400	10.78				
0.405	10.65				
0.410	10.48				
0.415	10.30				
0.420	10.24				
0.425	10.22				
0.430	10.22				
0.435	10.22				
2433075+					
0.410	10.98				
0.415	10.85				
0.420	10.70				
0.425	10.58				
0.430	10.47				
0.435	10.38				
0.440	10.32				
0.445	10.29				
0.450	10.30				
0.455	10.33				
0.460	10.38				
0.465	10.43				
0.470	10.47				
2433085+					
0.420	10.57				
0.425	10.47				

Table IV (cont.)

J.D.	m	J.D.	m	J.D.	m
2433085+		2433097+		2433134+	
0.430	10.38	0.525	10.99	0.560	11.37
0.435	10.29				
0.440	10.24	2433112+		2433149+	
0.445	10.20	0.350	11.21	0.380	11.54
0.450	10.20	0.370	11.20	0.390	11.54
0.455	10.21	0.390	11.20	0.400	11.52
0.460	10.23	0.410	11.20	0.410	11.49
0.465	10.25	0.430	11.20	0.420	11.43
0.470	10.28	0.450	11.21	0.425	11.39
0.475	10.30	0.470	11.21	0.430	11.33
0.480	10.33			0.435	11.26
0.485	10.36	2433124+		0.440	11.17
0.490	10.40	0.340	11.42	0.445	11.02
0.495	10.44	0.360	11.38	0.450	10.84
		0.380	11.34	0.455	10.66
2433094+		0.400	11.32	0.460	10.52
0.390	11.47	0.420	11.28	0.465	10.37
0.410	11.47	0.440	11.25	0.470	10.29
		0.460	11.27	0.475	10.26
2433095+		0.480	11.30	0.480	10.23
0.370	11.38	0.500	11.34	0.485	10.23
0.375	11.31	0.520	11.39	0.490	10.23
0.380	11.25			0.495	10.24
0.385	11.19	2433126+		0.500	10.26
0.390	11.13	0.410	11.59	0.505	10.28
0.395	11.07	0.430	11.48	0.510	10.30
0.400	11.00	0.450	11.39	0.515	10.34
0.405	10.95	0.470	11.31	0.520	10.38
0.410	10.89	0.490	11.23	0.525	10.43
0.415	10.83	0.510	11.18	0.530	10.48
0.420	10.78	0.530	11.14	0.535	10.52
0.425	10.74			0.540	10.58
0.450	10.65	2433134+		0.545	10.63
0.455	10.67	0.350	11.21	0.550	10.69
0.460	10.69	0.360	11.09	0.555	10.75
0.465	10.70	0.370	10.99		
0.470	10.73	0.380	10.92	2433161+	
0.475	10.76	0.390	10.91	0.480	11.50
0.480	10.79	0.400	10.92	0.490	11.48
0.485	10.82	0.410	10.95	0.500	11.45
0.490	10.85	0.420	10.98	0.510	11.41
0.495	10.88	0.440	11.04	0.520	11.35
		0.460	11.11	0.530	11.29
2433097+		0.480	11.19	0.540	11.21
0.460	11.29	0.500	11.26	0.550	11.12
0.480	11.18	0.520	11.31	0.555	11.07
0.500	11.10	0.540	11.35	0.560	11.00

Table IV (cont.)

J.D.	m	J.D.	m	J.D.	m
2433161+		2433189+		2433213+	
0.565	10.91	0.330	11.26	0.510	10.42
0.570	10.81	0.340	11.17	0.515	10.38
0.575	10.67	0.350	11.09	0.520	10.37
0.580	10.56	0.360	11.01	0.525	10.38
0.585	10.52	0.370	10.93	0.530	10.39
0.590	10.49			0.535	10.44
0.595	10.49	2433201+		0.540	10.49
0.600	10.49	0.321	11.24	0.545	10.55
0.605	10.49				
0.610	10.50	2433211+		2433248+	
		0.290	11.53	0.245	11.31
2433179+		0.310	11.52	0.250	11.24
0.285	11.52	0.320	11.50	0.255	11.16
		0.330	11.46	0.260	11.10
2433183+		0.340	11.40	0.265	11.04
0.530	11.53	0.345	11.34	0.270	10.99
0.540	11.49	0.350	11.29	0.275	10.93
0.550	11.42	0.355	11.24	0.280	10.88
0.555	11.37	0.360	11.17	0.285	10.82
0.560	11.27	0.365	11.12	0.290	10.77
0.565	11.15	0.370	11.06		
0.570	11.00	0.375	10.97	2433452+	
0.575	10.81	0.380	10.88	0.430	11.15
0.580	10.62	0.385	10.79	0.450	11.10
0.585	10.48	0.390	10.70	0.460	11.06
0.590	10.34	0.395	10.63	0.470	11.00
0.595	10.28	0.400	10.58	0.480	10.95
0.600	10.23	0.405	10.55	0.490	10.89
0.605	10.21	0.410	10.54	0.500	10.85
0.610	10.20	0.415	10.52	0.510	10.80
0.615	10.20			0.520	10.77
0.620	10.22	2433213+		0.530	10.78
		0.420	11.54		
2433184+		0.430	11.53	2433482+	
0.255	10.89	0.440	11.47	0.345	11.20
0.275	10.94	0.450	11.37	0.365	11.19
0.295	11.00	0.455	11.30		
0.315	11.08	0.460	11.23	2433484+	
0.335	11.19	0.465	11.16	0.360	11.43
0.355	11.29	0.470	11.08	0.380	11.42
		0.475	10.99	0.400	11.41
2433189+		0.480	10.90	0.420	11.40
0.260	11.41	0.485	10.82	0.440	11.41
0.280	11.42	0.490	10.74	0.450	11.41
0.300	11.42	0.495	10.65	0.460	11.34
0.310	11.39	0.500	10.56	0.470	11.27
0.320	11.34	0.505	10.47		

Table IV (cont.)

J.D.	m	J.D.	m	J.D.	m
2433484+		2433505+		2433511+	
0.480	11.18	0.490	11.72	0.450	11.09
0.490	11.10	0.520	11.68	0.470	11.10
0.500	11.03	0.540	11.65	0.490	11.10
0.510	10.96	0.560	11.63	0.510	11.13
0.520	10.88	0.580	11.61		
0.530	10.80			2433514+	
0.540	10.71	2433506+		0.340	11.30
0.550	10.63	0.440	11.52	0.360	11.26
		0.520	10.70	0.380	11.20
2433485+		0.525	10.63	0.400	11.13
0.360	11.61	0.530	10.57	0.420	11.05
0.380	11.67	0.535	10.50	0.440	10.96
0.400	11.70	0.540	10.04	0.450	10.94
0.420	11.73	0.545	10.40	0.460	10.94
0.440	11.76	0.550	10.38	0.480	11.00
0.460	11.78	0.555	10.38	0.500	11.06
0.500	11.72	0.560	10.38		
0.510	11.65	0.565	10.41	2433516+	
0.520	11.57	0.570	10.44	0.460	11.38
0.530	11.47	0.575	10.48	0.480	11.32
0.540	11.39	0.580	10.53	0.490	11.27
0.550	11.30	0.585	10.58	0.500	11.22
				0.510	11.16
				0.520	11.09
				0.530	11.03
				0.540	10.97
				0.550	10.92
				0.560	10.88
				0.570	10.86
2433504+		2433507+		2433536+	
0.390	11.27	0.350	11.24	0.320	11.55
0.395	11.15	0.370	11.32	0.340	11.51
0.400	11.06	0.390	11.39	0.360	11.45
0.405	10.96	0.410	11.45	0.370	11.40
0.410	10.88	0.430	11.51	0.380	11.33
0.415	10.81	0.450	11.56	0.390	11.25
0.420	10.74	0.470	11.61	0.400	11.16
0.425	10.66	0.490	11.65	0.410	11.08
0.430	10.61	0.510	11.66	0.420	11.00
0.435	10.57	0.530	11.66	0.430	10.93
0.440	10.55	0.550	11.67	0.440	10.85
0.445	10.55	0.570	11.66	0.450	10.78
0.450	10.55	0.590	11.66	0.460	10.74
0.455	10.56			0.470	10.72
				0.480	10.75
				0.490	10.79
2433505+		2433511+			
0.350	11.72	0.370	11.17		
0.370	11.74	0.380	11.15		
0.390	11.74	0.390	11.12		
0.410	11.74	0.410	11.10		
0.430	11.73	0.430	11.09		
0.450	11.73				
0.470	11.73				

Table IV (cont.)

J.D.	m	J.D.	m	J.D.	m
2433536+		2433545+		2433563+	
0.500	10.83	0.330	11.71	0.480	11.15
0.510	10.88	0.350	11.70	0.490	11.20
0.520	10.94			0.500	11.26
0.530	11.01	2433562+		0.510	11.29
		0.230	11.30		
2433537+		0.245	11.35	2433564+	
0.410	11.75	0.260	11.41	0.240	11.40
0.430	11.75	0.275	11.45	0.260	11.34
0.450	11.75			0.280	11.29
0.470	11.75	2433563+		0.300	11.24
0.490	11.75	0.230	11.65	0.320	11.21
0.510	11.74	0.240	11.64	0.340	11.22
0.530	11.72	0.250	11.63	0.350	11.26
0.550	11.70	0.260	11.61	0.360	11.31
0.570	11.66	0.270	11.57	0.370	11.36
0.590	11.57	0.280	11.51	0.380	11.41
0.610	11.47	0.285	11.46	0.390	11.44
0.630	11.33	0.290	11.41	0.425	11.50
		0.295	11.36	0.445	11.51
2433538+		0.300	11.30	0.465	11.52
0.500	11.36	0.305	11.25	0.485	11.53
0.505	11.31	0.310	11.16	0.505	11.51
0.510	11.25	0.315	11.05		
0.515	11.18	0.320	10.94	2433566+	
0.520	11.11	0.325	10.81	0.350	11.29
0.525	11.05	0.330	10.70	0.360	11.23
0.530	10.98	0.335	10.60	0.370	11.19
0.535	10.90	0.340	10.50	0.380	11.15
0.540	10.79	0.345	10.41	0.390	11.12
0.545	10.68	0.350	10.32	0.400	11.11
0.550	10.59	0.355	10.24	0.410	11.11
0.554	10.51	0.360	10.29	0.420	11.11
0.560	10.46	0.365	10.35	0.430	11.11
0.565	10.49	0.370	10.37	0.440	11.12
0.570	10.56	0.375	10.36	0.450	11.15
0.575	10.58	0.380	10.32	0.460	11.18
0.580	10.56	0.385	10.38	0.470	11.21
0.585	10.53	0.390	10.46	0.480	11.25
0.590	10.52	0.400	10.61	0.490	11.28
0.595	10.54	0.405	10.66	0.500	11.32
0.600	10.57	0.410	10.72	0.510	11.37
0.605	10.60	0.420	10.78		
0.610	10.64	0.430	10.85	2433567+	
0.615	10.67	0.440	10.92	0.325	11.70
0.620	10.71	0.450	10.96	0.345	11.71
0.625	10.75	0.460	11.03	0.365	11.72
0.630	10.78	0.470	11.09	0.385	11.73



Table IV (cont.)

J.D.	m	J.D.	m	J.D.	m
2433567+		2433569+		2433888+	
0.405	11.73	0.580	11.66	0.355	11.12
0.425	11.72	0.600	11.62	0.360	11.04
0.445	11.71	0.620	11.57	0.365	10.94
0.465	11.70	0.640	11.49	0.370	10.82
0.485	11.67			0.375	10.68
0.505	11.62	2433583+		0.380	10.58
0.515	11.55	0.210	11.31	0.385	10.49
0.525	11.45	0.215	11.23	0.390	10.42
0.535	11.37	0.220	11.13	0.395	10.40
0.545	11.28	0.225	11.01	0.400	10.38
		0.230	10.90	0.405	10.38
2433568+		0.240	10.64	0.410	10.38
0.225	11.45	0.245	10.51	0.415	10.39
0.245	11.50			0.420	10.40
0.265	11.53	2433613+		0.425	10.41
0.285	11.57	0.186	10.50	0.430	10.43
0.400	11.47	0.192	10.29	0.435	10.45
0.410	11.40			0.440	10.48
0.420	11.32	2433826+		0.445	10.51
0.430	11.24	0.375	11.63	0.450	10.55
0.440	11.16			0.455	10.58
0.450	11.10	2433838+		0.460	10.62
0.460	11.05	0.440	11.59	0.465	10.66
0.470	11.00	0.450	11.56	0.470	10.70
0.480	10.98	0.460	11.53	0.475	10.74
0.490	10.95	0.470	11.49	0.480	10.78
0.500	10.93	0.480	11.44		
0.510	10.92	0.490	11.38	2433889+	
0.520	10.92	0.500	11.32	0.310	11.38
0.530	10.92	0.510	11.26	0.320	11.34
0.540	10.94	0.520	11.21	0.330	11.30
0.550	10.97	0.530	11.20	0.340	11.28
0.560	11.01	0.540	11.22	0.350	11.26
0.570	11.06			0.360	11.25
0.580	11.12	2433887+		0.370	11.24
0.590	11.18	0.290	11.38	0.380	11.25
0.600	11.26	0.310	11.38	0.410	11.28
		0.330	11.37	0.430	11.31
2433569+		0.350	11.37	0.450	11.35
0.230	11.20			0.470	11.40
0.250	11.26	2433888+		0.490	11.44
0.270	11.30	0.310	11.45	0.510	11.48
0.480	11.67	0.320	11.42		
0.500	11.69	0.330	11.38	2433890+	
0.520	11.69	0.340	11.31	0.370	11.61
0.540	11.69	0.345	11.27	0.410	11.55
0.560	11.68	0.350	11.20	0.440	11.51

Table IV (cont.)

J.D.	m	J.D.	m	J.D.	m
2433890+		2433900+		2433950+	
0.460	11.48	0.510	10.91	0.285	10.91
		0.520	10.91	0.290	10.76
2433891+		0.530	10.91	0.295	10.62
0.310	11.54	0.540	10.92	0.300	10.51
0.330	11.46	0.550	10.94	0.305	10.43
0.350	11.39	0.560	10.97	0.310	10.36
0.370	11.33	0.570	11.01	0.315	10.30
0.390	11.28	0.580	11.07	0.320	10.28
0.410	11.24	0.590	11.14	0.325	10.28
0.430	11.22	0.600	11.22	0.330	10.29
0.450	11.22			0.335	10.30
0.470	11.24	2433920+		0.340	10.33
0.490	11.25	0.335	11.61	0.345	10.37
0.510	11.27	0.345	11.43	0.350	10.40
0.530	11.30	0.355	11.24	0.355	10.44
0.550	11.33			0.360	10.47
0.570	11.38	2433924+		0.365	10.52
0.590	11.41	0.380	11.67	0.370	10.56
0.610	11.45	0.400	11.69		
		0.420	11.70	2433970+	
2433898+		0.440	11.70	0.190	11.03
0.300	11.30	0.460	11.64	0.200	10.91
0.310	11.27	0.470	11.61	0.205	10.84
0.320	11.23	0.480	11.58	0.210	10.77
0.330	11.18	0.490	11.58	0.215	10.69
0.340	11.12	0.500	11.61	0.220	10.61
0.350	11.02	0.510	11.65	0.225	10.54
0.360	10.93	0.520	11.66		
0.370	10.84	0.530	11.65	2433980+	
0.380	10.81	0.540	11.63	0.180	11.24
0.390	10.81	0.550	11.60	0.185	11.02
0.400	10.83	0.560	11.56	0.190	10.85
0.410	10.86	0.570	11.51	0.195	10.70
0.420	10.90	0.580	11.46	0.200	10.57
0.430	10.95	0.585	11.43	0.205	10.48
0.440	11.00	0.590	11.39	0.210	10.43
0.450	11.06	0.595	11.34	0.215	10.37
0.460	11.13	0.600	11.27	0.220	10.34
		0.605	11.18	0.225	10.33
2433900+		0.610	11.10	0.230	10.33
0.440	11.26	0.615	10.99	0.235	10.34
0.450	11.16	0.620	10.88	0.240	10.36
0.460	11.09	0.625	10.77		
0.470	11.03	0.630	10.67	2433982+	
0.480	10.98	0.635	10.58	0.265	11.41
0.490	10.94	0.640	10.49	0.270	11.35
0.500	10.92	0.645	10.40	0.275	11.30
		0.650	10.38	0.280	11.25

Table IV (cont.)

J.D.	m	J.D.	m	J.D.	m
2433982+					
0.285	11.18	2434215+		0.410	11.33
0.290	11.11	0.540	10.59	0.440	11.30
0.295	11.03	2434233+			
0.300	10.95	0.335	10.38	0.470	11.27
0.305	10.87	0.340	10.34	0.500	11.25
0.310	10.57	0.350	10.31	0.530	11.24
0.315	10.44	0.355	10.31	0.560	11.27
0.320	10.35	0.365	10.35	0.590	11.31
0.325	10.28	0.370	10.39	2434243+	
0.330	10.25	0.380	10.48	0.320	10.81
0.355	10.33	2434236+			
2434192+					
0.385	11.45	0.340	11.36	0.325	10.65
0.405	11.46	0.360	11.40	0.330	10.53
0.425	11.46	0.380	11.44	0.335	10.43
0.445	11.46	0.400	11.48	0.340	10.37
0.465	11.45	0.420	11.51	0.345	10.32
0.485	11.44	0.440	11.54	0.350	10.30
0.505	11.42	0.460	11.56	0.355	10.30
0.525	11.41	0.480	11.57	0.360	10.31
2434214+					
0.390	11.30	0.500	11.59	0.365	10.33
0.410	11.32	0.520	11.59	0.370	10.37
0.430	11.36	0.540	11.59	0.375	10.41
0.450	11.40	0.560	11.60	0.380	10.46
0.470	11.44	0.580	11.60	0.390	10.54
0.490	11.47	2434237+			
0.509	11.49	0.510	11.51	0.400	10.61
0.530	11.51	0.520	11.48	0.410	10.68
2434215+					
0.460	11.57	0.525	11.45	0.420	10.77
0.470	11.55	0.530	11.39	0.430	10.85
0.480	11.50	0.535	11.31	0.440	10.94
0.490	11.46	0.540	11.17	2434253+	
0.495	11.41	0.545	11.00	0.300	11.06
0.500	11.37	0.555	10.65	0.310	10.95
0.505	11.31	0.560	10.56	0.320	10.87
0.510	11.25	0.565	10.51	0.330	10.81
0.515	11.18	0.570	10.47	0.340	10.82
0.520	11.11	0.575	10.45	0.350	10.85
0.525	11.01	0.580	10.44	0.360	10.88
0.530	10.88	0.585	10.42	0.370	10.91
0.535	10.73	0.590	10.42	2434254+	
2434240+					
0.320	11.47	2434254+			
0.350	11.42	0.290	11.64	0.320	11.55
0.380	11.37	0.350	11.47	0.350	11.47
		0.380	11.40	0.380	11.40
		0.410	11.38	0.410	11.38
		0.440	11.39	0.440	11.39
		0.460	11.42	0.460	11.42

Table IV (cont.)

J.D.	m	J.D.	m	J.D.	m
2434255+		2434282+		2434304+	
0.330	11.48	0.630	11.44	0.460	10.99
0.340	11.46			0.470	11.01
0.350	11.42	2434284+		0.480	11.03
0.360	11.38	0.270	11.53	0.490	11.06
0.370	11.33	0.300	11.51	0.500	11.10
0.375	11.29	0.330	11.48	0.510	11.13
0.380	11.24	0.360	11.43	0.520	11.17
0.385	11.18	0.390	11.36	0.530	11.20
0.390	11.11	0.420	11.31	0.540	11.22
0.395	11.00	0.450	11.30	0.550	11.25
0.400	10.88	0.480	11.32	0.560	11.27
		0.510	11.35	0.580	11.33
2434277+		0.540	11.39	0.600	11.40
0.380	11.50	0.570	11.41	0.620	11.44
0.390	11.51	0.600	11.43	0.635	11.46
0.400	11.50	0.620	11.45		
0.410	11.49	2434295+		2434305+	
0.420	11.40	0.255	10.62	0.235	11.19
0.425	11.30	0.260	10.56	0.240	11.05
0.430	11.20	0.265	10.53	0.245	10.93
0.435	11.08	0.270	10.51	0.250	10.82
0.450	10.74	0.275	10.50	0.255	10.71
0.455	10.62	0.280	10.51	0.260	10.61
0.460	10.50	0.285	10.54	0.265	10.53
0.465	10.39	0.290	10.58	0.270	10.46
0.470	10.33	0.295	10.63	0.275	10.43
0.475	10.29	0.300	10.67	0.280	10.42
0.480	10.26	0.305	10.72	0.285	10.43
0.485	10.25	0.310	10.76	0.290	10.45
0.490	10.26	0.315	10.82	0.295	10.47
0.495	10.28	0.320	10.88	0.300	10.49
0.500	10.32	0.325	10.94	0.305	10.52
0.505	10.36	0.330	11.00	0.310	10.56
0.510	10.41	2434304+		0.320	10.61
0.515	10.47	0.250	11.66	0.330	10.68
0.520	10.52	0.270	11.64	0.340	10.75
2434282+		0.290	11.62	0.350	10.82
0.490	11.50	0.335	11.56	0.360	10.89
0.500	11.46	0.355	11.49	0.370	10.97
0.510	11.43	0.390	11.32	0.380	11.05
0.530	11.39	0.400	11.25		
0.550	11.35	0.410	11.19	2434567+	
0.570	11.33	0.420	11.13	0.370	11.59
0.590	11.34	0.430	11.06	0.390	11.58
0.610	11.38	0.440	11.01	0.410	11.57
		0.450	10.99	0.430	11.57
				0.450	11.57

Table IV (cont.)

J.D.	m	J.D.	m	J.D.	m
2434567+		2434601+		2434620+	
0.470	11.54	0.400	11.48	0.410	10.94
0.495	11.38	0.420	11.47	0.415	11.02
0.505	11.32	0.440	11.45	0.420	11.10
0.515	11.29	0.455	11.45		
0.525	11.29	0.470	11.45	2434622+	
0.535	11.31	0.485	11.46	0.440	10.39
0.545	11.34	0.500	11.46	0.450	10.39
		0.520	11.48	0.460	10.42
2434569+		0.540	11.49	0.470	10.45
0.470	11.43			0.480	10.51
0.490	11.43	2434602+		0.490	10.59
		0.485	11.16	0.500	10.67
2434598+		0.490	11.00	0.510	10.76
0.330	10.52	0.495	10.85	0.520	10.83
0.340	10.59	0.500	10.70	0.530	10.91
0.350	10.65	0.505	10.57	0.540	10.99
0.360	10.72	0.510	10.44	0.550	11.07
0.369	10.78	0.515	10.33	0.560	11.16
		0.520	10.25	0.570	11.25
2434600+		0.525	10.20		
0.345	11.47	0.530	10.20	2434624+	
0.350	11.41	0.535	10.22	0.475	11.11
0.355	11.34	0.540	10.25	0.490	11.05
0.360	11.26	0.545	10.28	0.500	10.99
0.365	11.19	0.550	10.32	0.510	10.89
0.370	11.09	0.560	10.38	0.520	10.74
0.375	10.99	0.570	10.44	0.525	10.67
0.380	10.87	0.580	10.51	0.530	10.61
0.385	10.74	0.590	10.58	0.535	10.54
0.390	10.65			0.540	10.48
0.395	10.53	2434620+		0.545	10.44
0.400	10.46	0.330	10.80	0.550	10.40
0.405	10.40	0.335	10.75	0.555	10.37
0.410	10.36	0.340	10.70	0.560	10.35
0.415	10.35	0.345	10.66	0.565	10.34
0.420	10.33	0.350	10.65	0.570	10.35
0.425	10.32	0.355	10.63	0.575	10.36
0.430	10.32	0.360	10.63	0.580	10.38
0.435	10.33	0.365	10.62	0.585	10.42
0.440	10.34	0.370	10.63	0.590	10.46
0.445	10.36	0.375	10.64	0.600	10.61
0.450	10.39	0.380	10.65	0.610	10.76
		0.385	10.67	0.620	10.92
2434601+		0.390	10.71		
0.340	11.57	0.395	10.77	2434629+	
0.360	11.53	0.400	10.82	0.310	11.55
0.380	11.51	0.405	10.88	0.330	11.47

Table IV (cont.)

J.D.	m	J.D.	m	J.D.	m
2434629+		2434649+		2434654+	
0.350	11.40	0.330	10.95	0.475	10.58
0.370	11.33	0.335	10.89	0.480	10.59
0.390	11.27	0.340	10.82	0.485	10.60
0.410	11.22	0.345	10.75	0.490	10.61
0.430	11.18	0.350	10.68	0.494	10.63
0.450	11.14	0.355	10.61	0.499	10.66
0.470	11.11	0.360	10.55	0.504	10.68
0.490	11.10	0.365	10.51	0.509	10.71
0.510	11.10	0.370	10.49	0.514	10.73
0.525	11.11	0.375	10.49	0.520	10.76
0.590	11.13	0.380	10.50		
0.610	11.21	0.385	10.52	2434656+	
0.625	11.29	0.390	10.55	0.525	11.10
		0.400	10.63	0.530	11.00
2434630+		0.410	10.70	0.535	10.92
0.275	11.19	0.420	10.78	0.540	10.83
0.280	11.12			0.545	10.76
0.285	11.04	2434652+		0.550	10.71
0.290	10.96	0.255	11.37	0.555	10.65
0.295	10.88	0.265	11.28	0.560	10.62
0.300	10.81	0.275	11.18	0.565	10.61
0.305	10.75	0.285	11.09	0.570	10.60
0.310	10.70	0.295	10.99	0.575	10.60
0.315	10.66	0.305	10.90	0.580	10.61
0.320	10.64	0.315	10.82	0.585	10.61
0.325	10.62	0.320	10.79	0.590	10.62
0.330	10.62	0.325	10.78	0.595	10.62
0.335	10.63	0.330	10.78	0.600	10.63
0.340	10.63	0.335	10.80	0.610	10.65
0.345	10.64	0.345	10.86	0.620	10.68
0.350	10.65	0.355	10.94	0.630	10.72
0.355	10.66	0.365	11.01	0.639	10.77
0.360	10.68	0.375	11.08	0.650	10.84
0.380	10.74	0.385	11.14		
0.390	10.76	0.395	11.21	2434661+	
0.400	10.79	0.405	11.28	0.335	11.70
0.410	10.82			0.345	11.62
		2434654+		0.355	11.54
2434649+		0.400	11.19	0.365	11.47
0.290	11.50	0.410	11.09	0.375	11.40
0.295	11.42	0.420	11.00	0.385	11.32
0.300	11.34	0.430	10.91	0.425	11.03
0.305	11.27	0.440	10.82	0.435	10.96
0.310	11.21	0.450	10.73	0.445	10.88
0.315	11.15	0.460	10.64	0.455	10.81
0.320	11.08	0.465	10.60	0.465	10.74
0.325	11.01	0.470	10.59	0.475	10.67

Table IV (cont.)

J.D.	m	J.D.	m	J.D.	m
2434662+		2434664+		2434987+	
0.305	11.02	0.475	10.55	0.580	11.15
0.315	10.94	0.480	10.59	0.590	11.17
0.325	10.86	0.490	10.67	0.600	11.20
0.335	10.79			0.610	11.21
0.345	10.73	2434920+			
0.355	10.69	0.410	10.99		
0.360	10.67	0.440	11.09	2434989+	
0.365	10.66			0.410	11.55
0.370	10.65	2434924+		0.420	11.55
0.375	10.66	0.415	11.56	0.430	11.52
0.380	10.67	0.480	11.50	0.440	11.49
0.385	10.68	0.500	11.50	0.450	11.36
0.390	10.70	0.520	11.49	0.460	11.07
0.400	10.75			0.465	10.98
0.410	10.79	2434987+		0.470	10.88
0.420	10.83	0.345	11.19	0.475	10.79
0.430	10.87	0.355	11.17	0.480	10.71
0.440	10.92	0.365	11.13	0.490	10.62
0.450	10.97	0.375	11.07	0.500	10.57
0.460	11.02	0.385	11.01	0.510	10.54
		0.395	10.96	0.520	10.54
2434664+		0.405	10.91	0.530	10.56
0.390	11.47	0.415	10.87	0.540	10.61
0.395	11.39	0.425	10.82	0.550	10.66
0.400	11.30	0.435	10.79	0.560	10.72
0.405	11.22	0.445	10.75	0.570	10.80
0.410	11.14	0.450	10.74		
0.415	11.05	0.455	10.72	2434990+	
0.420	10.97	0.460	10.71	0.360	11.62
0.425	10.87	0.465	10.72	0.380	11.61
0.430	10.79	0.470	10.73	0.400	11.60
0.435	10.71	0.500	10.85	0.415	11.60
0.440	10.65	0.510	10.91	0.480	11.63
0.445	10.60	0.520	10.96	0.500	11.65
0.450	10.56	0.530	11.01	0.520	11.67
0.455	10.52	0.540	11.05		
0.460	10.51	0.550	11.08	2435009+	
0.465	10.50	0.560	11.11	0.350	11.40
0.470	10.52	0.570	11.13	0.370	11.40